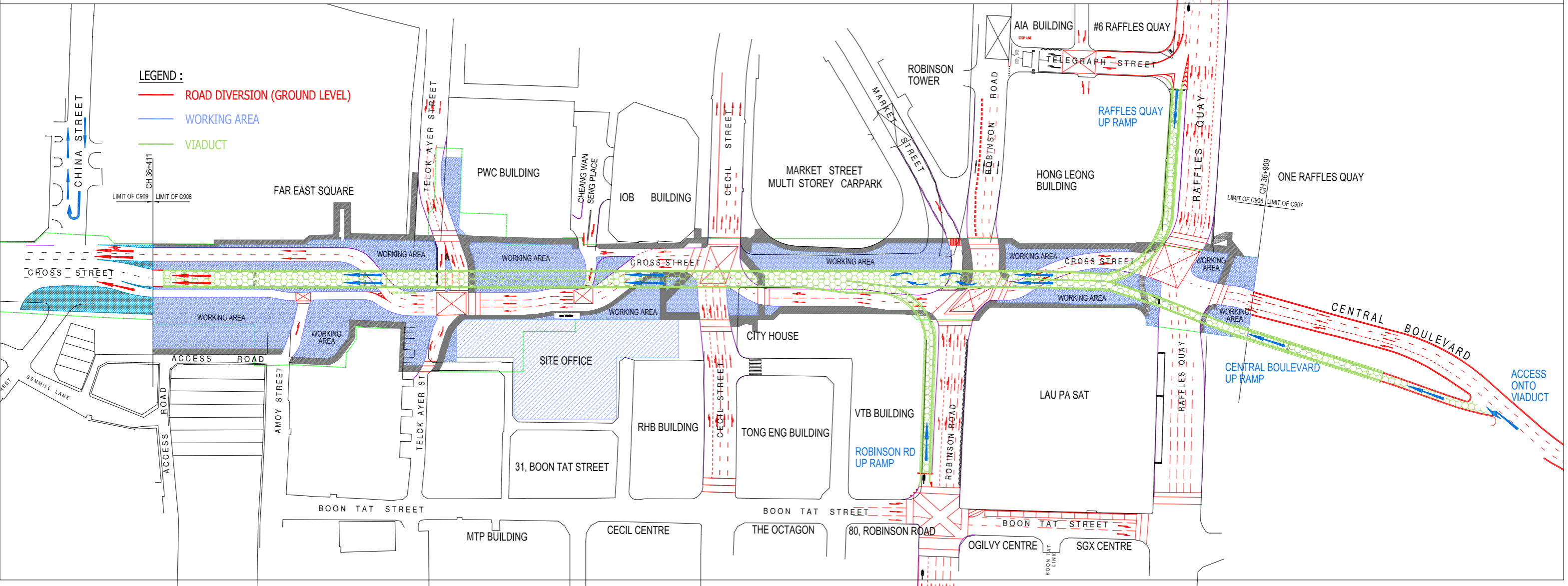


ROAD DIVERSION ALONG CROSS STREET IN AUGUST 2009



LEGEND :

- ROAD DIVERSION (GROUND LEVEL)
- WORKING AREA
- VIADUCT

Streets and Locations: CHINA STREET, FAR EAST SQUARE, PWC BUILDING, IOB BUILDING, MARKET STREET MULTI STOREY CARPARK, ROBINSON TOWER, AIA BUILDING, #6 RAFFLES QUAY, TELEGRAPH STREET, RAFFLES QUAY UP RAMP, HONG LEONG BUILDING, ONE RAFFLES QUAY, CROSS STREET, WORKING AREA, CITY HOUSE, LAU PA SAT, ACCESS ROAD, AMOY STREET, TELOK AYER ST, SITE OFFICE, RHB BUILDING, TONG ENG BUILDING, VTB BUILDING, ROBINSON RD UP RAMP, BOON TAT STREET, MTP BUILDING, CECIL CENTRE, THE OCTAGON, 80, ROBINSON ROAD, BOON TAT STREET, OGLIVY CENTRE, SGX CENTRE, GEMMILL LANE, ACCESS ROAD, AMOY STREET, TELOK AYER ST, BOON TAT STREET, MTP BUILDING, CECIL CENTRE, THE OCTAGON, 80, ROBINSON ROAD, BOON TAT STREET, OGLIVY CENTRE, SGX CENTRE.

Other Labels: CHEANG WAN SENG PLACE, MARKET STREET, ROBINSON ROAD, RAFFLES QUAY, CENTRAL BOULEVARD, ACCESS ONTO VIADUCT, LIMIT OF C909, LIMIT OF C908, CH 36+411, CH 36+909, LIMIT OF C908, LIMIT OF C907.