

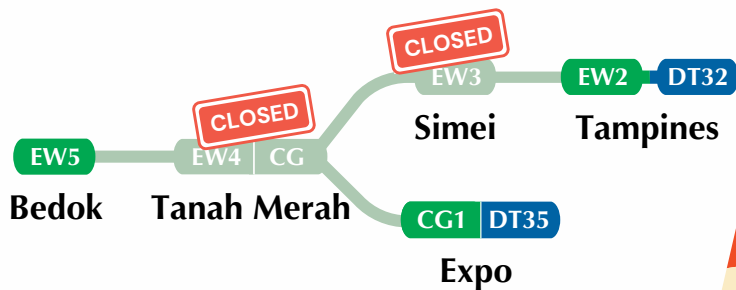
TRAIN SERVICE ADJUSTMENTS ON THE EAST-WEST LINE

29 Nov – 8 Dec 2025



East-West Line

No Train Service Between



Look out for signage at stations or approach on-site staff for directions.

We Are Strengthening Rail Network Resilience

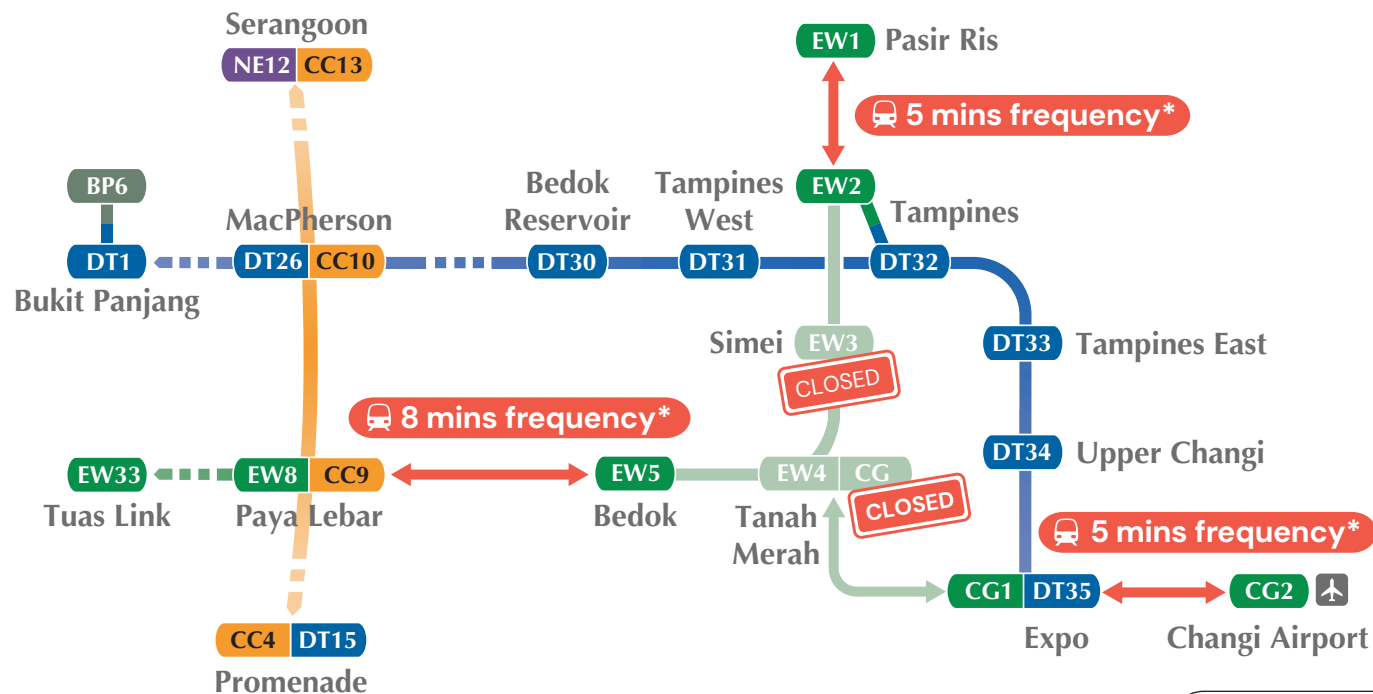
LTA is integrating the East-West Line (EWL) to the new East Coast Integrated Depot (ECID). The new Tanah Merah station platform will also be operationalised.

The new ECID will increase capacity for train launches and withdrawals, and help us to better adjust service patterns for a more resilient rail network.

To facilitate these works, there will be service adjustments from **Paya Lebar to Pasir Ris stations, and Tanah Merah to Changi Airport stations.**

Take Note Of These Train Service Adjustments

- 1 Simei and Tanah Merah stations will be closed from **29 November to 8 December 2025.**
- 2 There will be no train service on the EWL, between **Bedok and Tampines stations**, and between **Tanah Merah and Expo stations.**
- 3 **Shuttle trains will operate between these stations:**
 - Tampines and Pasir Ris
 - Paya Lebar and Bedok
 - Expo and Changi Airport
- 4 Shuttle buses will be available to serve commuters at the closed MRT stations.



*During peak hours

Thank you for your kind understanding.

Please refer to LTA's website and social media platforms for more information and updates.

Alternative Shuttle Bus Routes

For commuters travelling between
Bedok and Tampines stations

NO EWL TRAIN SERVICE
BETWEEN BEDOK AND TAMPINES &
BETWEEN TANAH MERAH AND SIOPO
FROM SATURDAY, 29 NOVEMBER 2025
TO MONDAY, 8 DECEMBER 2025

BOARDING POINT

Shuttle 7
towards

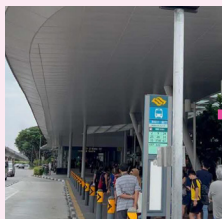
EW2 Tampines

Bedok Tanah Merah Sioipo Tampines

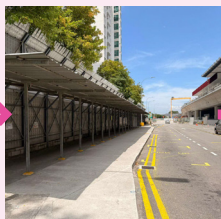


TAKE SHUTTLE 7* Frequency: 3-5 mins

FROM BEDOK TO TAMPINES



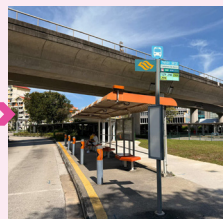
Board at
Bus Stop
84031
outside
Bedok station
Exit B



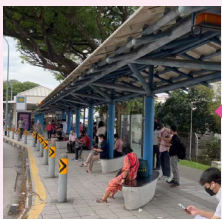
Alight/Board
at existing
Pick-up
Drop-off
Point outside
Tanah Merah station Exit B



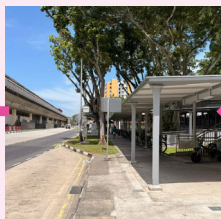
Alight/Board
at Bus Stop
96169
outside Simei
station and
Eastpoint Mall



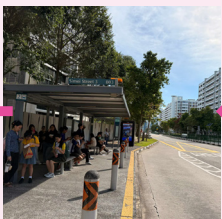
Alight at
Bus Stop
76551 outside
Tampines
station Exit D
(outside Tampines Bus
Interchange)



Alight at Bus
Stop 84039
outside
Bedok
station Exit A



Alight/Board
at existing
Pick-up
Drop-off
Point outside
Tanah Merah station Exit A



Alight/Board
at Bus Stop
96161
opposite
Simei station

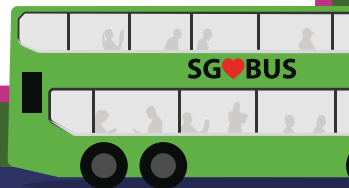


Board at Bus
Stop 76559
after Tampines
Exit E
(opposite
Tampines Bus Interchange)



FROM TAMPINES TO BEDOK

***Fares Apply**



Alternative Shuttle Bus Routes

For commuters travelling between
Bedok and Expo stations



TAKE SHUTTLE 8* Frequency: ~10 mins

NO EWL TRAIN SERVICE

BETWEEN BEDOK AND TAMPINES &
BETWEEN TANJUN MERAH AND D'POI
FROM SATURDAY, 29 NOVEMBER
TO MONDAY, 8 DECEMBER 2025

**BOARDING
POINT**

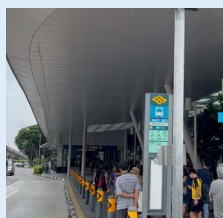


**Shuttle 8
towards**

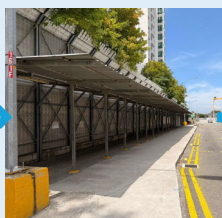
(G1) Expo



FROM BEDOK TO EXPO



Board at Bus
Stop 84031
outside
Bedok station
Exit B



Alight/Board
at existing
Pick-up
Drop-off
Point outside
Tanah Merah station Exit B



Alight at Bus
Stop 96301
outside
Expo station
Exit B



EW5

Bedok

EW4

CG

Tanah Merah

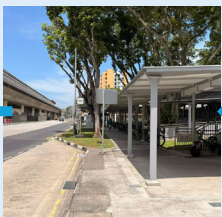
CG1

DT35

Expo



Alight at Bus
Stop 84039
outside
Bedok station
Exit A



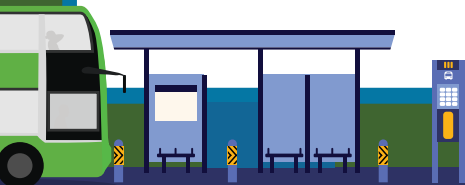
Alight/Board
at existing
Pick-up
Drop-off
Point outside
Tanah Merah station Exit A



Board at Bus
Stop 96301
outside
Expo station
Exit B



FROM EXPO TO BEDOK



Travelling to Pasir Ris, Tampines, or Changi Airport stations? Here are some recommended routes!

To Tampines and Pasir Ris station

Take the **DTL** at MacPherson station to Tampines station

Transfer to the **EWL** at Tampines station to travel to Pasir Ris station



Take the **DTL** at Bugis station to Tampines station

Transfer to the **EWL** at Tampines station to travel to Pasir Ris station



To Tanah Merah, Expo, or Changi Airport station


Using the Downtown Line to reach Expo or Changi Airport station

Take the **DTL** train to Expo station

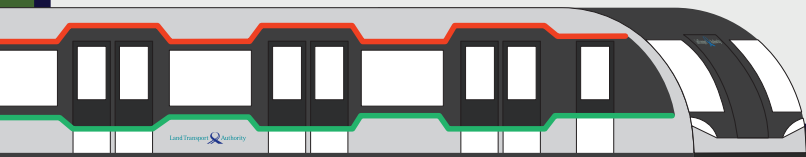
Transfer to the **EWL** to travel to Changi Airport station



Using Shuttle 8 to reach Tanah Merah, Expo or Changi Airport station

Board  Shuttle 8 at **EWL** Bedok station and alight at Expo station

Take the **EWL** towards Changi Airport

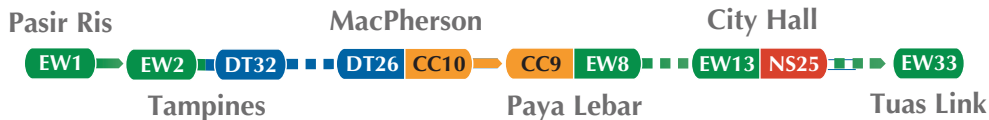


Travelling from Pasir Ris, Tampines, Tanah Merah or Simei stations? Here are some recommended routes!

From Pasir Ris or Tampines station

Take the **DTL** and transfer to the **CCL** at MacPherson station

Transfer to the **EWL** at Paya Lebar station towards the City and Tuas Link



Take the **EWL** to Tampines station

Take the **DTL** from Tampines station to Bugis station



From Simei station

Take Shuttle 7 from Simei station

Transfer to the **DTL** at Tampines station towards the City and Tuas Link



From Tanah Merah station

Take Shuttle 7 or 8 from Tanah Merah station to **EWL** Bedok station

Transfer to the **EWL** at Bedok station towards the City and Tuas Link




Regular bus services are also available to connect commuters to **EWL and **DTL**.**

To and From Simei station


To and from Tampines West **DTL** : Take Service  5

To and from Tampines East **DTL** : Take Service  9 or 38

To and from Bedok and Tanah Merah **EWL** :
Take Service  9

To and from Changi Airport: Take Service  20 to Expo station and transfer to the **EWL** to Changi Airport station

To and From Tanah Merah station

To and from Tampines **EWL** / **DTL** :
Take Service  31

To and from Tampines East **DTL** :
Take Service  12, 12e, 38

To and from Bedok **EWL** :
Take Service  2, 9, 24, 31, 35/35M

PLAN AHEAD FOR A SMOOTHER JOURNEY



Plan your journey in advance and factor in additional travelling time



Look out for signage at stations, or approach on-site staff for directions

To and from Changi Airport:
Take Service  24



Scan QR code for more information.



Frequently Asked Questions

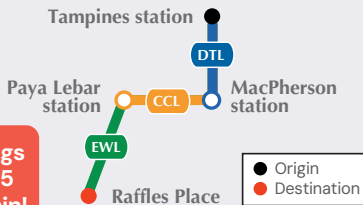
Q1

How much additional time do I have to factor in when planning my journey?

If you are heading towards the City, consider taking the Downtown Line for a faster journey. For example:

From Tampines to Raffles Place station

via **DTL** Downtown Line >
CCL Circle Line >
EWL East-West Line

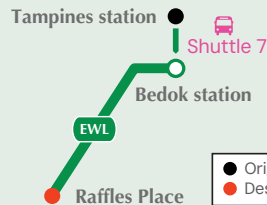


Time savings
of about 15
mins by train!

Travel Time Comparison (To Raffles Place)

Current EWL	about 35 mins
Via DTL > CCL > EWL	about 40 mins
Additional Travel Time	about 5 mins

via **Shuttle 7** and
EWL East-West Line



Travel Time Comparison (To Raffles Place)

Current EWL	about 35 mins
Via Shuttle 7 and EWL	about 55 mins
Additional Travel Time	about 20 mins

Q2

Will the train frequencies for the rest of the East-West Line stations be affected?

Train frequencies for the rest of the **EWL** East-West Line will not be affected.

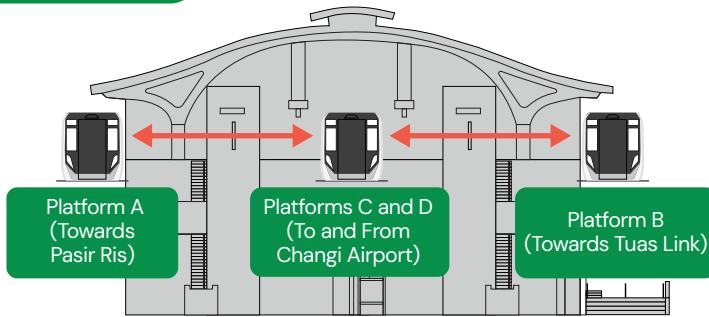
Q3

What are the operating hours for Shuttles 7 and 8? Do I have to pay to board the bus?

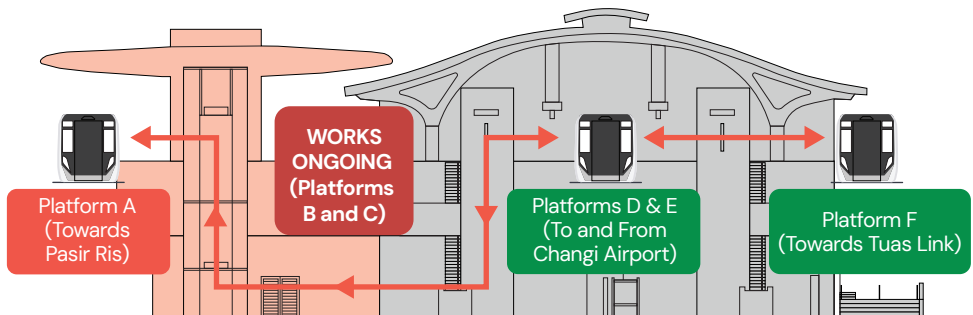
Operating hours for Shuttles 7 and 8 will follow the **EWL** East-West Line's first and last train timings. Fares for the shuttle bus service will follow the same fare structure as trains.

How to navigate the new platforms at Tanah Merah station?

Before 9 Dec 2025



From 9 Dec 2025



- 1 Platforms B & C will not be in use from 9 December 2025.
- 2 Commuters heading towards Expo and Changi Airport stations on the eastbound train should alight at Platform A, and take the escalators or lifts down to the concourse area and proceed up to Platform D to board the train towards Changi Airport.
- 3 Commuters heading towards Pasir Ris station from Expo or Changi Airport stations should alight at Platform D and take the escalators or lifts down to the concourse area and proceed up to the new Platform A to board the train towards Pasir Ris.



Existing



New



Movement of Commuters