

Road Tunnel Safety Guide

Importance of Road Tunnel Safety

As road tunnels are confined spaces, it is important for motorists to drive carefully and know the steps to take when an incident or emergency occurs within them. This includes knowledge of the emergency alerts and facilities inside road tunnels.

Knowing what to do in an emergency can make a difference in ensuring your safety and the safety of others.

3 Good Driving Habits

When driving inside tunnels, remember to:



1. Switch on:
 - Headlights
 - Local FM radio



2. Follow the overhead lane use signs and look at electronic signboards for messages.



3. Observe the speed limit while driving.



In The Event of an Emergency:



If you are approaching the tunnel:

- Do not enter tunnel.
- Look at electronic signboards for messages.
- Seek alternative route.



If you are inside the tunnel:

- Follow lane use signs and do not proceed further if all lanes are marked with a red "X".
- Tune in to any local FM radio station and follow the announcements.
- If you cannot proceed further, turn off your vehicle's ignition and head to the nearest emergency escape route on foot.
- Stay vigilant and look out for road users who may be evacuating from vehicles.

If you have to evacuate from a tunnel on foot, follow the steps below:

Woodville Tunnel/Fort Canning Tunnel

Head for the tunnel entrance

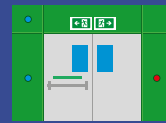
CTE Tunnel/KPE Tunnel/MCE Tunnel/Sentosa Gateway Tunnel



Head for the nearest:

Escape staircase, which is located every 500 metres in the tunnel next to the slow lane. The stairs lead to street level;

or



Pedestrian cross-passage door, which is located every 100 metres, next to the fast lane. Doors lead to the opposite-bound tunnel.

The emergency exits may be identified by their red-and-white or green panels.



Not Permitted Inside Road Tunnels

- Pedestrians
- Tankers carrying diesel fuel
- Bicycles/power-assisted bicycles/tricycles/trishaws/personal mobility devices
- Buses or goods vehicles (Sentosa Gateway Tunnel)
- Vehicles taller than 3.5m for Sentosa Gateway Tunnel and 4.5m for all other tunnels
- Heavy vehicle drivers are to ensure that their vehicles do not exceed the height limits of the tunnels.
- Vehicles wider than 3m
- Vehicles longer than 13m
- Vehicles carrying dangerous goods (e.g. explosives, flammable substances etc.)
- Trailers conveying standard containers

For more information, visit onemotoring.com.sg

If You Find Yourself in These Situations:



Vehicle on fire

- Stop vehicle at road shoulder.
- Turn off vehicle's ignition and evacuate from your vehicle.
- Call 995 or use the emergency SOS phones for help.
- You may also use the fire break-glass unit to sound the fire alarm.



Accident

- If there are injuries, call 995/999.
- Otherwise, drive out of the tunnel if possible.
- If your vehicle needs towing, use the emergency SOS phones or call LTA at 1800-2255 582 for assistance.



Vehicle Breakdown

- Stop vehicle at road shoulder.
- Switch on hazard lights.
- Get yourself onto the raised platform.
- Use the emergency SOS phones or call LTA at 1800-2255 582 for assistance.
- Do not attempt to change your tyres, repair or refuel your vehicle inside the tunnel.

Did You Know?

Fire extinguishers can be found in fire service cabinets located every 50 metres next to the slow lane inside tunnels.



All information is correct as at January 2018.

All road tunnels are monitored round the clock.

In the event of an emergency, use the emergency SOS phones to contact LTA's Operations Control Centre or call LTA at 1800-2255 582 for assistance.

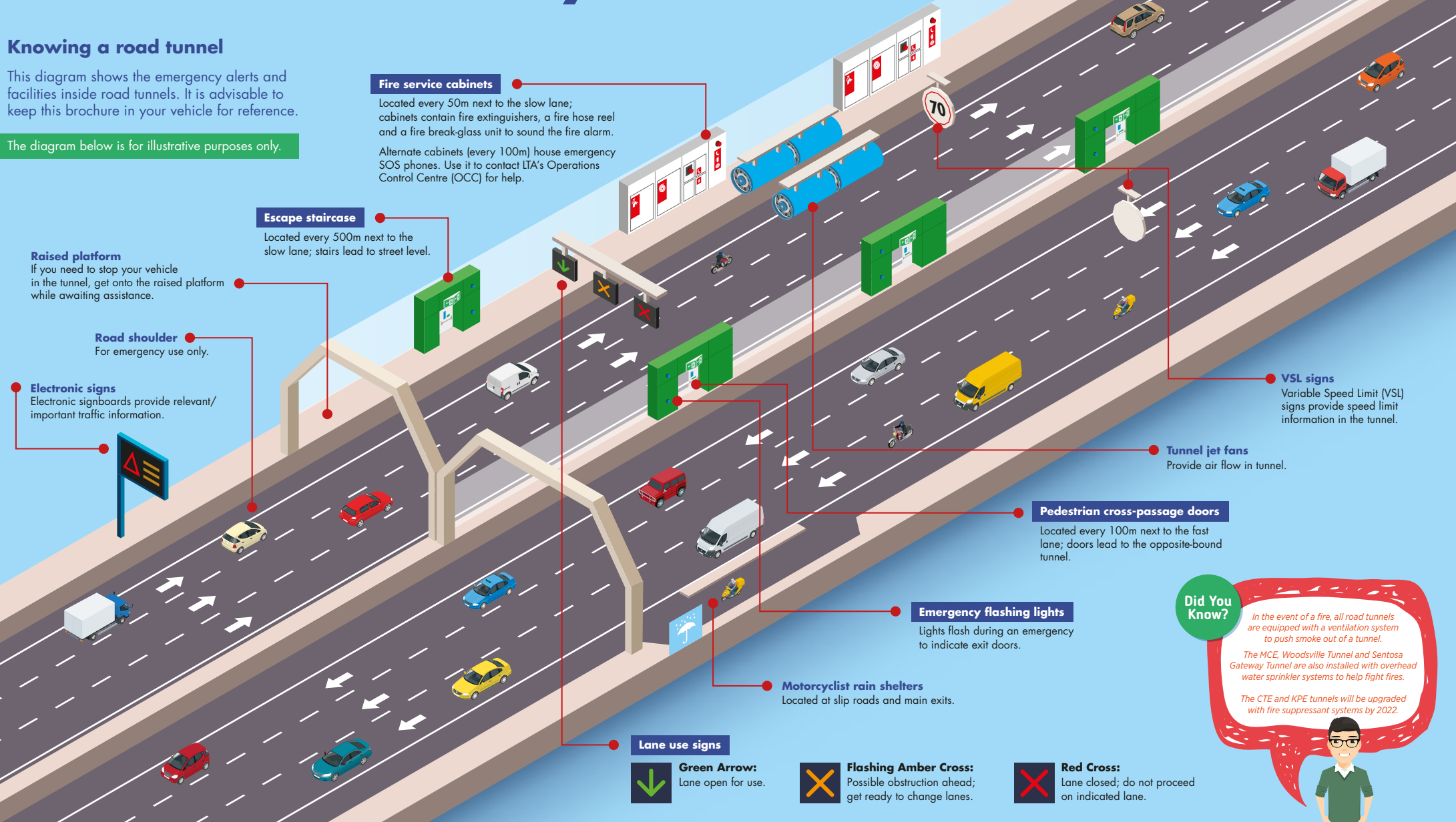
Provide your exact location by referring to nearby emergency exit door labels, slip road names or kilometre markings on wall panels/raised platforms.

Road Tunnel Safety Guide

Knowing a road tunnel

This diagram shows the emergency alerts and facilities inside road tunnels. It is advisable to keep this brochure in your vehicle for reference.

The diagram below is for illustrative purposes only.



All road tunnels are monitored round the clock.

In the event of an emergency, use the emergency SOS phones to contact LTA's Operations Control Centre or call LTA at 1800-2255 582 for assistance.

Provide your exact location by referring to nearby emergency exit door labels, slip road names or kilometre markings on wall panels/raised platforms.

