

Max & Robbie's Magical Train Ride



A Story About Thoughtfulness

Copyright © 2021 Land Transport Authority of Singapore

Story Written & Published by: Land Transport Authority of Singapore

All rights reserved.

No part of this publication may be reproduced, stored in a retrieval system, or transmitted, in any form or by any means, electronic, mechanical, photocopying, recording, or otherwise, without the prior written permission of the Land Transport Authority of Singapore.

Printed in Singapore

National Library Board, Singapore Cataloguing-in-Publication Data

Title: Max & Robbie's Magical Train Ride

Identifier(s): ISBN 978-981-18-2380-0 (paperback) | 978-981-18-2379-4 (e-book)

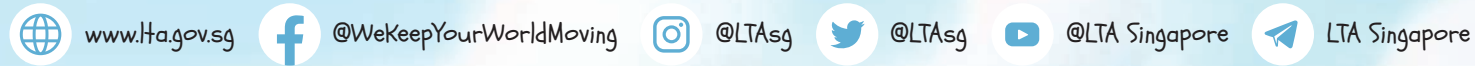
Subject(s): LCSH: Local transit—Singapore—Juvenile fiction | Subways—Singapore—Juvenile fiction

Classification: DDC 428.6-dc23

Acknowledgements

Special thanks to the educators and children from PCF Sparkletots Preschool @ Nee Soon Central Block 723, for sharing their ideas and helping to develop this book – a story that shows gracious commuting behaviour on public transport.

Follow Land Transport Authority (LTA) for the latest transport updates:



All information in this book is correct at the time of printing.

Max & Robbie's Magical Train Ride



"Mum! Let us help you run your errands!" volunteered Max excitedly.

"Are you sure you're able to deliver food to your grandparents?" Mum was doubtful. "It's going to be the first time you're taking the train on your own."



"Yes, we can! It's going to be a grand adventure!" exclaimed Max's best friend, Robbie.



"Alright! Here you go. Stay safe and be gracious on the train," Mum reminded the boys.



Through the gantry,



down the escalator...



and onto the platform
the boys went.

"Uh-oh! Where are the train doors?" asked a worried Max.

NS17



"Looks like the passengers
are blocking the train doors
and getting in the way of
those alighting. We have got to
do something!" answered Robbie.

Clickety-clack came the sound of high-heels.
"Look, it's Give-Way Glenda!" Max cheered.

Let's all glide to
the side and
give way to those
alighting.

With a step and a slide,
to the left and the right,
everyone parted to make way.

After letting others alight, Max and Robbie hopped on board with ease. Give-Way Glenda waved them goodbye from the platform and the boys were on their way.



"1, 2, 3, 4, 5..."
Eager to meet Grandpa and Grandma, Max and Robbie counted the number of stops to their home.

At the next station, a pink flamingo wobbled and hobbled in.
"Max!" said Robbie, "Miss Flamingo looks like she needs a seat."



Max looked around but all the seats were taken. The nearest one was occupied by Mr Lion. He was busy on his phone and barely noticed Miss Flamingo.
"Uh-oh. What should we do?" asked Robbie, looking concerned.

A shimmer on the sticker behind the elderly lady caught Max and Robbie's eyes.
With a twinkle and sparkle, out came Stand-Up Stacey!



"Hi, Mr Lion! Would you mind giving up your seat to Miss Flamingo, please?" Stand-Up Stacey requested.

We give up our seats
for those in need!



Mr Lion immediately stood up. "I'm sorry, Miss Flamingo. I was too engrossed in my game," he apologised.

"Thank you, Mr Lion, Stand-Up Stacey and boys," Miss Flamingo responded gratefully.



Stand-Up Stacey winked and popped back into the sticker in the blink of an eye.

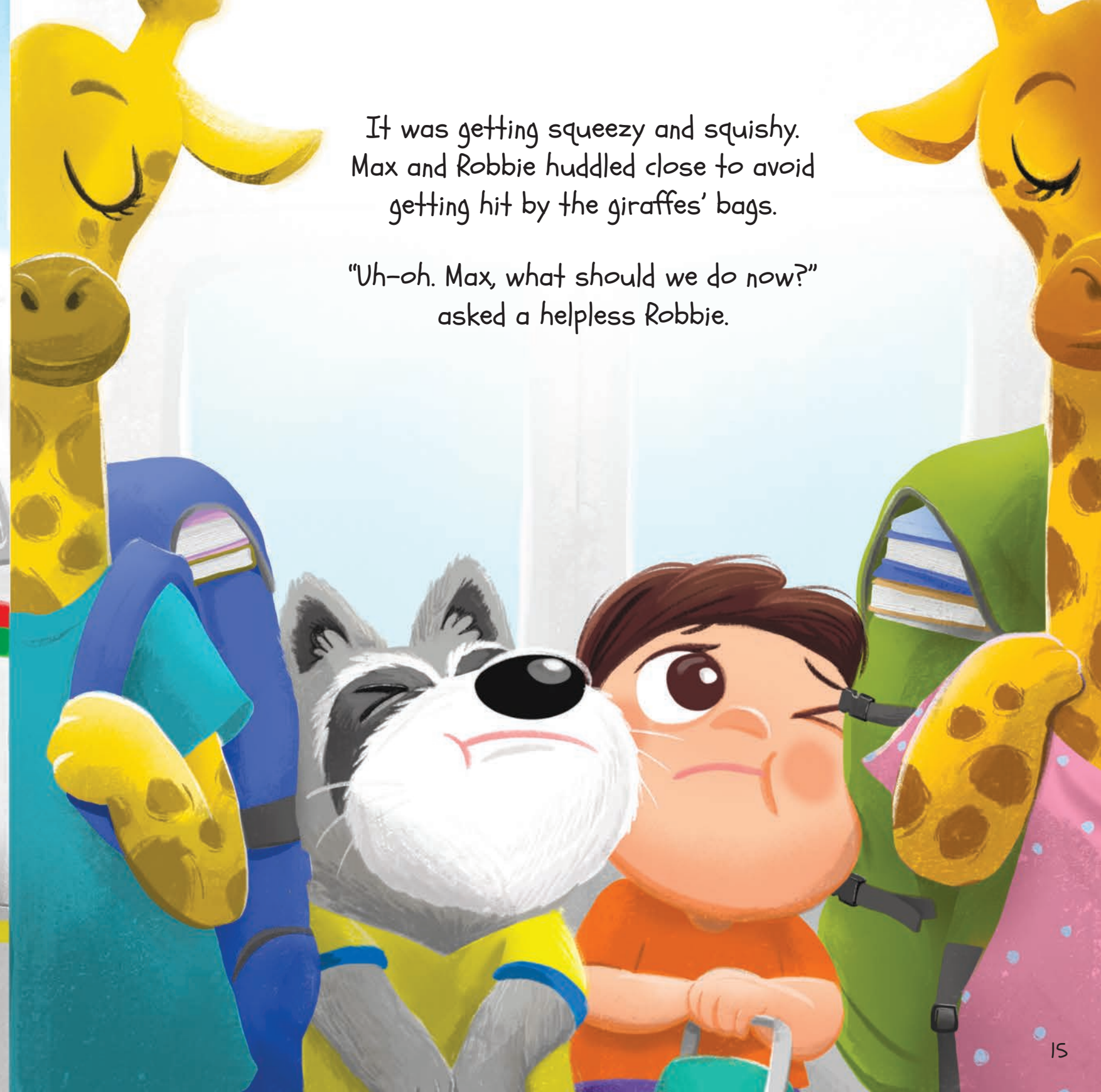
"Yio Chu Kang..."
went the train announcement.




Mr and Mrs Giraffe lumbered in,
lugging two big bags on their backs.

It was getting squeezezy and squishy.
Max and Robbie huddled close to avoid
getting hit by the giraffes' bags.

"Uh-oh. Max, what should we do now?"
asked a helpless Robbie.



A cartoon character named Bag-Down Benny is sliding down a thick yellow rope. He is wearing a blue baseball cap with a red band, a red long-sleeved shirt with white stripes and the number 8, blue pants, and red sneakers. He has a yellow backpack. The background shows a white structure with other ropes and handles, suggesting a playground or a cabin interior.

Out of the blue, the roof of the cabin opened. Within seconds, Bag-Down Benny slid down from a rope.

Bag-Down Benny is standing on a green floor, looking up at a group of animals. He is wearing the same outfit as on the previous page. A yellow backpack is on the floor next to him. A blue speech bubble from the animals says, "Let's put our bags down, shall we? Let's make space for others!". The animals include two giraffes, a grey dog, and a boy with brown hair. The background is a simple indoor setting with a white wall and a doorway.

Let's put our bags down, shall we?
Let's make space for others!

"We're sorry, boys! We're so used to carrying these bags everywhere that we forgot to put them down," said Mrs Giraffe sheepishly.



"Thank you. It's much more comfortable now," Robbie replied.

"Thank you for your help!" Max called out as Bag-Down Benny ascended the rope.



More passengers poured into the train at the next stop and crowded around Max and Robbie near the doors.



That's when Max realised, "We should all move in to the middle of the cabin."

"Uh-oh. But now we're stuck here,"
Robbie murmured regrettably.



Suddenly, the lights dimmed. A spotlight beamed on, casting a silhouette in the cabin. It was Move-In Martin!



"Thank you, everyone, for moving in. All of you are the real stars!" gushed Move-In Martin.

Move-In Martin took a bow and vanished into thin air with a poof!



Boom! Boom! Boom! Boom!



"Mr Koala is blasting music so loudly. I can hear what he is listening to through his headphones," Robbie grumbled.



"Shhh.... Let's try to get him to lower the volume," Max mouthed as he placed a finger to his lips.



Quietly, a secret passageway opened up and out came Hush-Hush Hannah.

"You know what to do," she gestured and whispered.

"Hi, Mr Koala, let's keep our volume down, shall we?" prompted Max and Robbie politely.

We can keep this train ride peaceful for everyone around!



Mr Koala immediately lowered the volume of his music and apologised, "I'm sorry, I got carried away!"

Max and Robbie rejoiced, "A quiet train ride is just what we like! Thank you!"



"Indeed," Hush-Hush Hannah agreed. She tiptoed down the underground staircase and disappeared from sight.

"We've reached Sembawang MRT Station!"
Max and Robbie said in unison as they hopped off the train,
excited to visit Grandpa and Grandma.



As they exited the station,
five familiar faces on a poster
made them smile in delight.

"Congratulations on your first train ride without your mum and dad, Max!
Thanks, Robbie, for coming along as well!" Grandpa praised the boys while
Grandma gave them a hug.



"What an interesting ride," Grandma remarked.
Max and Robbie nodded in agreement.



It was truly a wonderful,
magical journey with
thoughtfulness all around!

Activities

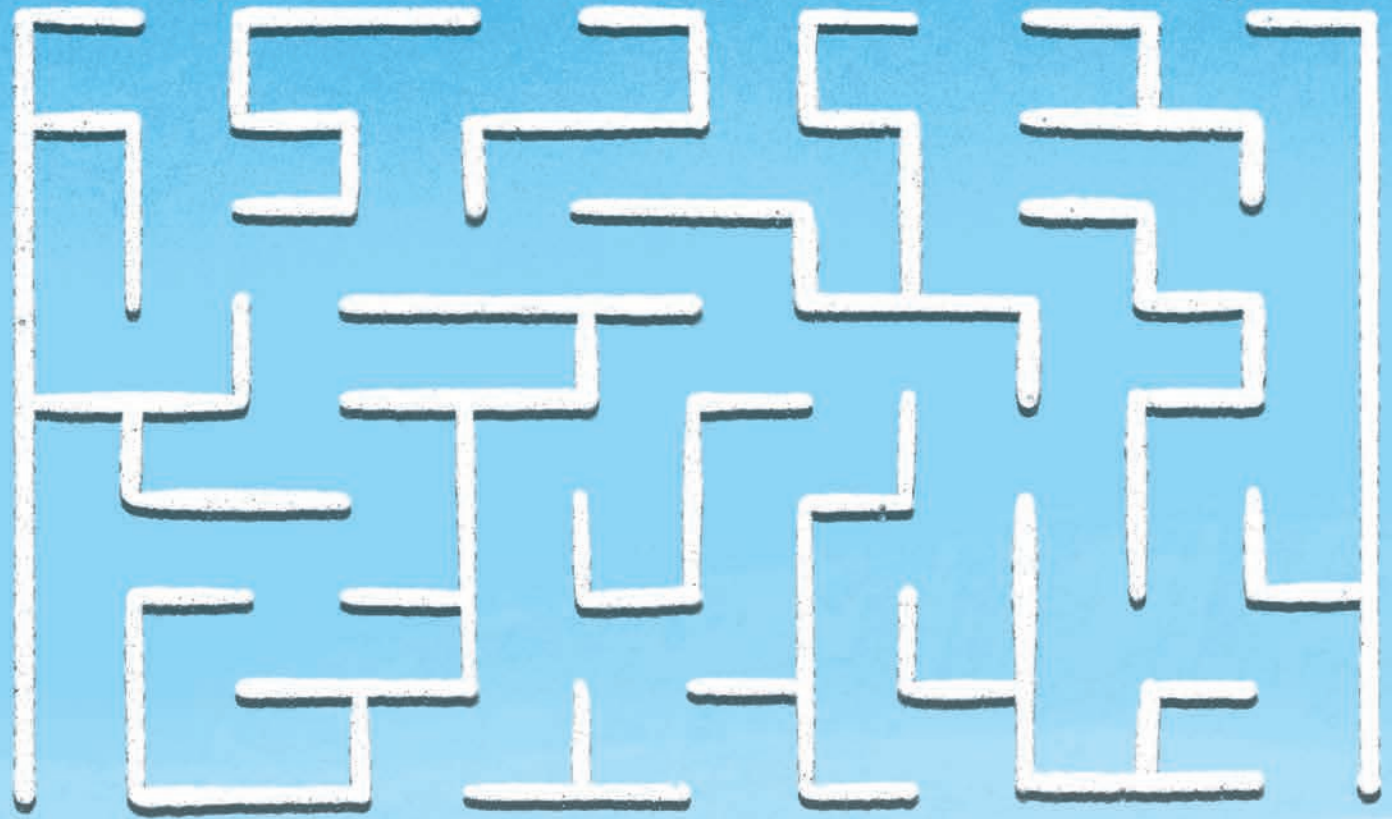
That magical train ride was fun, wasn't it?
Let's play some games to practise what you've learnt!



THOUGHTFUL MATCH

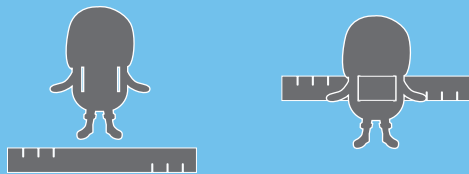
Now that you know all the thoughtful moves, can you match each of the characters to their signature move? Grab your pencil and match each message to the correct character!

- Glide to the side for smoother rides
Give-Way Glenda
- Volume down, smiles all around
Hush-Hush Hannah
- Bags by your side, more space to ride
Bag-Down Benny
- Shuffle in for more to get on
Move-In Martin
- Get on your feet for those in need
Stand-Up Stacey



THOUGHTFUL FINGER PUPPETS

1. Tear out the characters and strips along the dotted lines.
2. Slot the strips through the openings in each character.
3. Wrap the finger puppet around your finger and secure it using the cut out strips.



Cut out the Thoughtful Bunch character tokens along the dotted lines. To make the dice, cut it out, fold the flaps and glue them together. Use them for the Thoughtful Trail game on page 36 and 37.





WHERE'S THE THOUGHTFUL BUNCH?

You're in Sembawang MRT Station and you need a little help from the Thoughtful Bunch. Can you spot them? Use a pencil to circle each character out!



THOUGHTFUL TRAIL



HOW TO PLAY

1. Gather up to 5 players. They can be your family or your friends!
2. Tear out the dice and character tokens on page 35. Pick a character for yourself.
3. Take turns to roll the dice and take the number of steps forward as shown on your dice.
4. If you land on the Thoughtful Tile (yellow), move up the rail tracks to the connecting tile.
5. If you land on the Unthoughtful Tile (grey), take the stated number of steps back.
6. The player who gets to the Finish first wins!

Max and Robbie take a trip
on the MRT train on their own – for the very first time!
It turns out to be a wonderful, magical journey
with thoughtfulness all around.

