

PROPOSED DEVELOPMENT

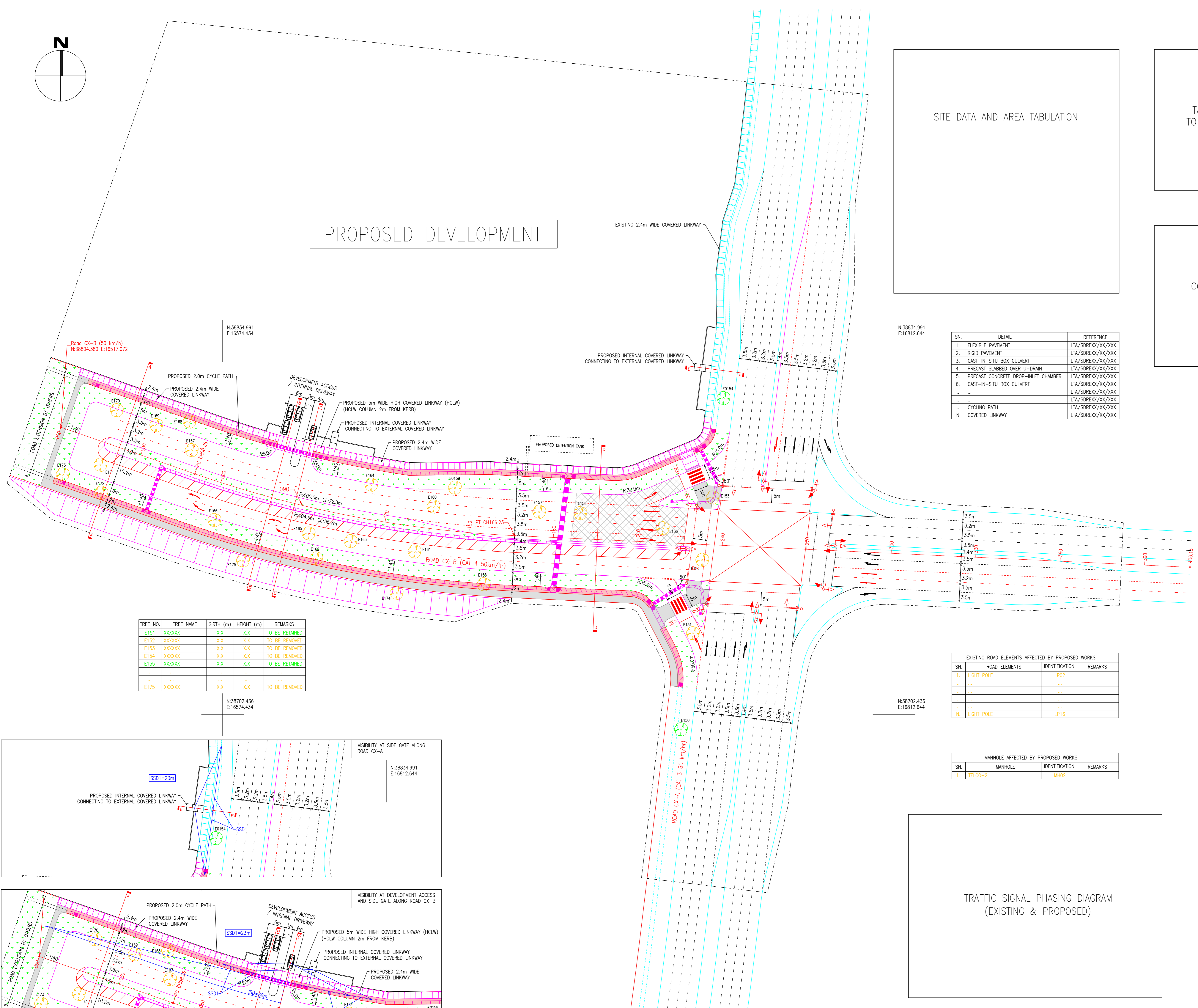
SITE DATA AND AREA TABULATION

TABULATION FOR LAND AREA TO BE VESTED BACK TO STATE

KEY PLAN SCALE 1:XXXX

COMPUTATION FOR VEHICLE PARKING SPACE

COMPUTATION FOR BICYCLE PARKING SPACE



SN.	DETAIL	REFERENCE
1.	FLEXIBLE PAVEMENT	LTA/SOREXX/XX/XXX
2.	RIGID PAVEMENT	LTA/SOREXX/XX/XXX
3.	CAST-IN-SITU BOX CULVERT	LTA/SOREXX/XX/XXX
4.	PRECAST SLABBED OVER U-DRAIN	LTA/SOREXX/XX/XXX
5.	PRECAST CONCRETE DROP-INLET CHAMBER	LTA/SOREXX/XX/XXX
6.	CAST-IN-SITU BOX CULVERT	LTA/SOREXX/XX/XXX
...
...
...
N	COVERED LINKWAY	LTA/SOREXX/XX/XXX

TREE NO.	TREE NAME	GIRTH (m)	HEIGHT (m)	REMARKS
E151	XXXXXX	X.X	X.X	TO BE RETAINED
E152	XXXXXX	X.X	X.X	TO BE REMOVED
E153	XXXXXX	X.X	X.X	TO BE REMOVED
E154	XXXXXX	X.X	X.X	TO BE REMOVED
E155	XXXXXX	X.X	X.X	TO BE RETAINED
...
E175	XXXXXX	X.X	X.X	TO BE REMOVED

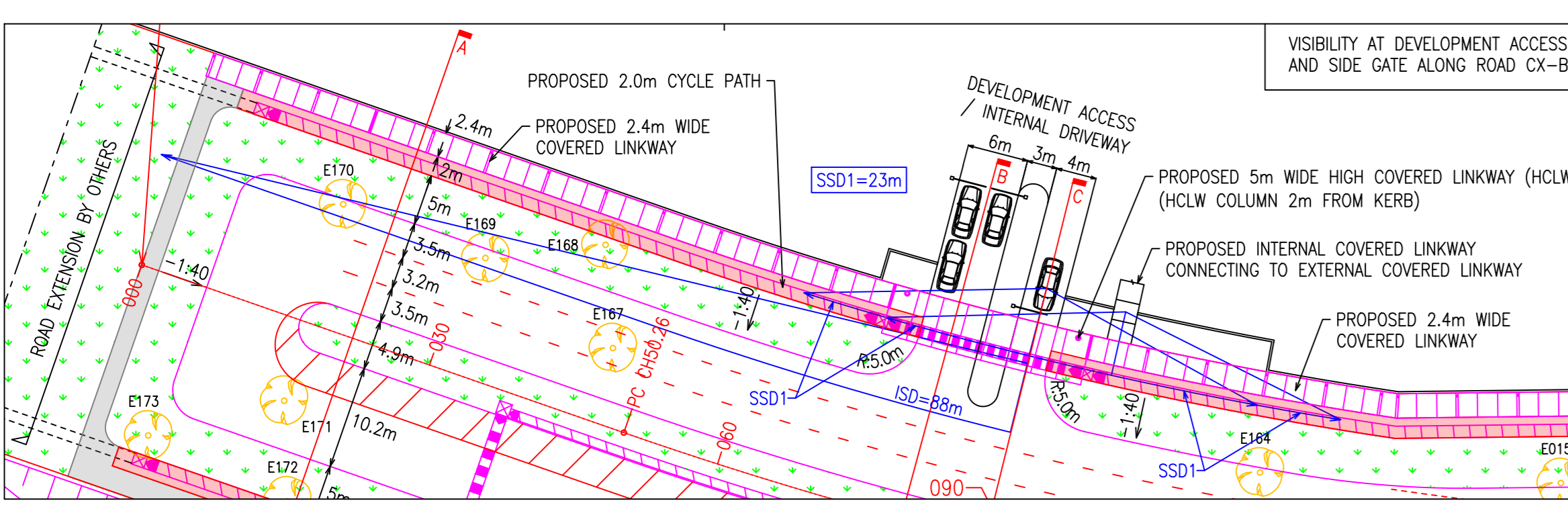
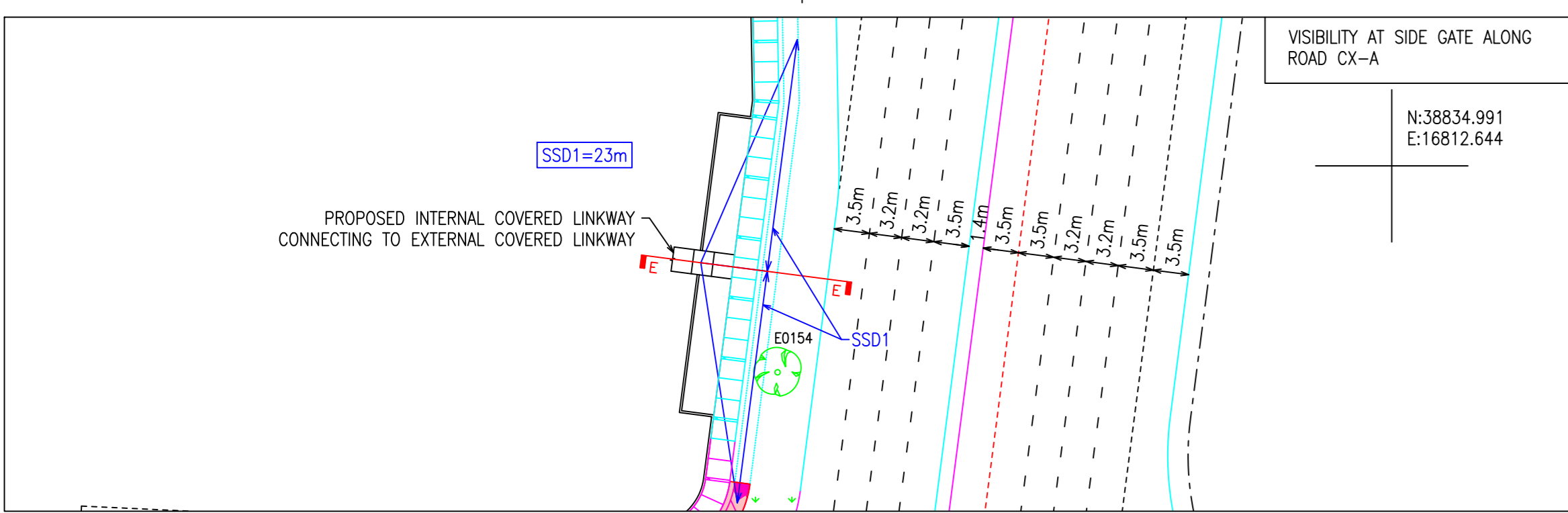
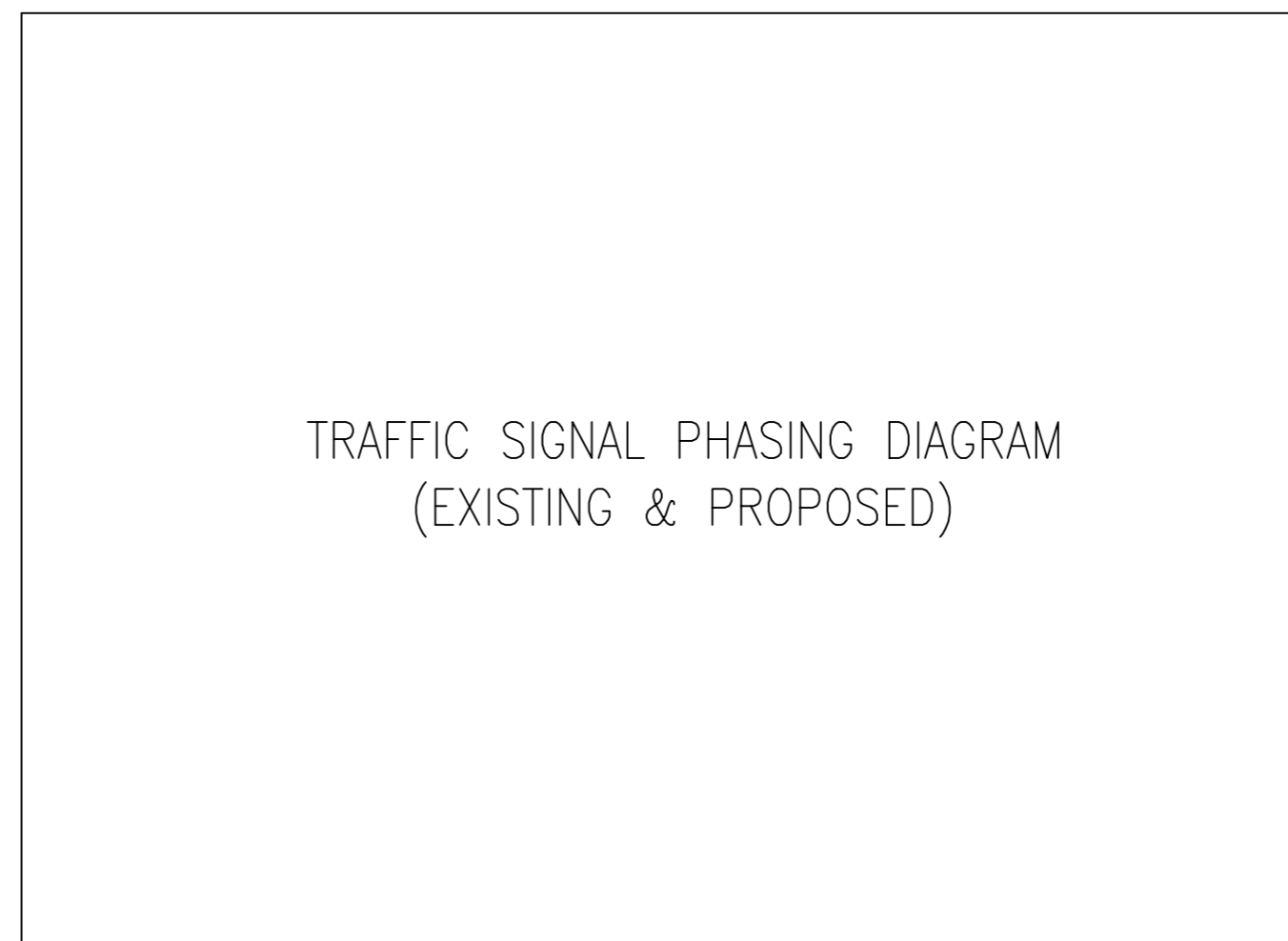
EXISTING ROAD ELEMENTS AFFECTED BY PROPOSED WORKS			
SN.	ROAD ELEMENTS	IDENTIFICATION	REMARKS
1	LIGHT POLE	LP02	
...
N	LIGHT POLE	LP16	

MANHOLE AFFECTED BY PROPOSED WORKS			
SN.	MANHOLE	IDENTIFICATION	REMARKS
1	TELCO-2	M-02	

LEGEND

- DEVELOPMENT BOUNDARY
- SCOPE OF WORK / LIMIT OF CONTRACT
- ROAD RESERVE LINE
- DRAINAGE RESERVE
- PROPOSED KERB
- EXISTING KERB TO BE RETAINED
- EXISTING KERB TO BE REMOVED
- BOUNDARY WALL (FULL HEIGHT)
- BOUNDARY WALL (LOW HEIGHT)
- FENCING
- OPEN DRAIN
- COVERED DRAIN
- DRAIN WITH VEHICULAR GRATING
- BOX CULVERT WITH SUMP
- RETAINING WALL
- BORED PILES
- SLOPE / EMBANKMENT WITH TURFING
- COVERED LINKWAY
- FOOTPATH
- CYCLE PATH
- RIGID PAVEMENT
- TREE PLANTING / SERVICE VERGE
- TREE TO BE RETAINED
- TREE TO BE REMOVED
- RED AMBER & GREEN SIGNAL
- RED AMBER & GREEN ARROWS SIGNAL
- PEDESTRIAN SIGNAL
- 'PEDESTRIAN CROSSING' SIGN ON FLASHING BEACON

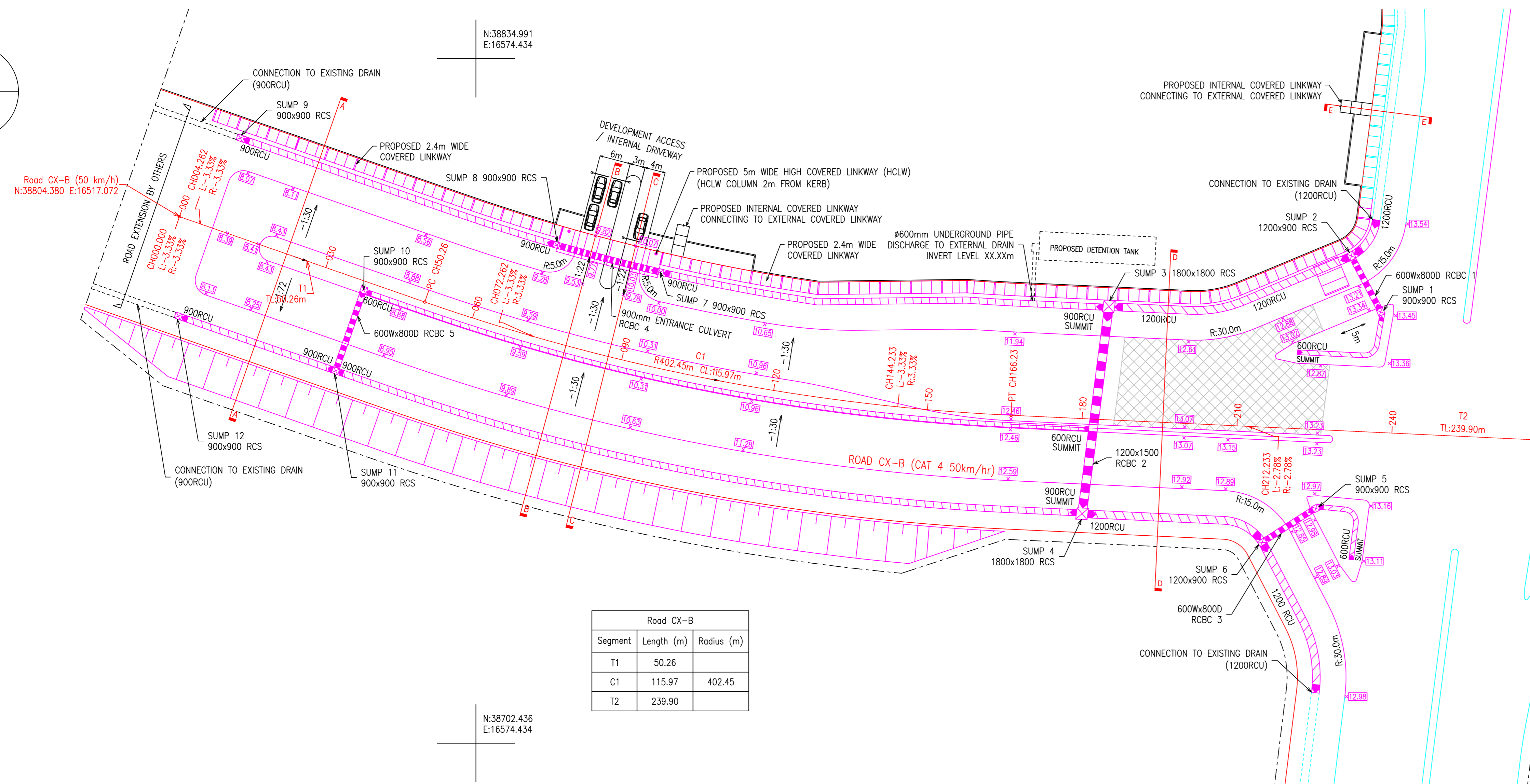
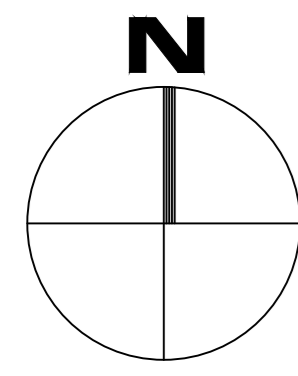
NOTE: OMIT LEGENDS THAT ARE NOT IN USE



SHEET INDEX :		PE ENDORSEMENT :		CONSULTANT :		DEVELOPER / CONTRACTOR :		REV		SUBMISSION ES / CR NUMBER		DATE		DRAWN BY / CAD LEADER		DESCRIPTION		DESIGNED BY		CHECKED BY		APPROVED BY		PROJECT TITLE :		DRAWING TITLE :		PROJECT REFERENCE NUMBER :	
								R1		1 Apr 2026		Update to overall plan layout.												ROAD & JUNCTION LAYOUT PLAN ROAD CX-B					
																								DRAWING NUMBER : X/XXXX/XX/RAU/1001		REV. NO. : R1			
																								DATE : 1 DEC 2023		SCALE : 1:500		SHEET NO. : A0	
																								CAD FILE NAME :					

NOTE: FULL NAME TO BE INDICATED ON PLAN

LTA DG / CG SUBMISSION

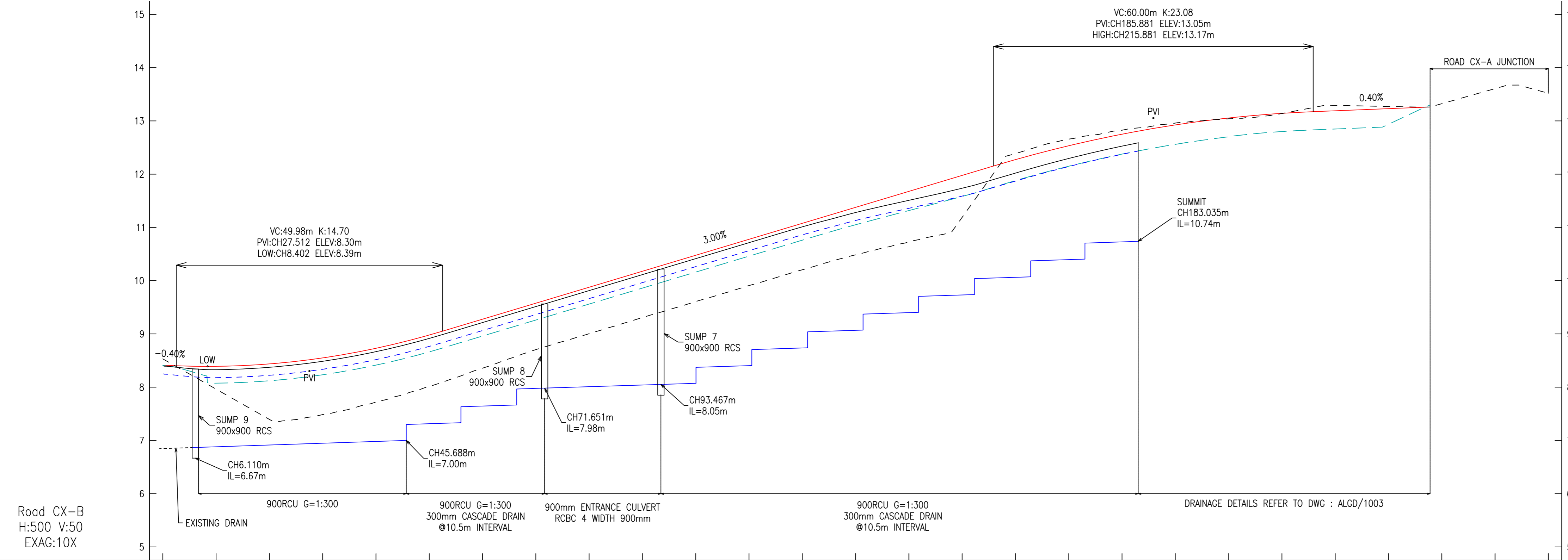


KEY PLAN
SCALE 1:XXXX

LEGEND	
	DEVELOPMENT BOUNDARY
	SCOPE OF WORK / LIMIT OF CONTRACT
	ROAD RESERVE LINE
	DRAINAGE RESERVE
	PROPOSED KERB
	EXISTING KERB TO BE RETAINED
	EXISTING KERB TO BE REMOVED
	BOUNDARY WALL (FULL HEIGHT)
	BOUNDARY WALL (LOW HEIGHT)
	FENCING
	OPEN DRAIN
	COVERED DRAIN
	DRAIN WITH VEHICULAR GRATING
	BOX CULVERT WITH SUMP
	RETAINING WALL
	BORED PILES
	SLOPE / EMBANKMENT WITH TURFING
	COVERED LINKWAY
	RIGID PAVEMENT

NOTE : OMIT LEGENDS THAT ARE NOT IN USE

SN.	DETAIL	REFERENCE
1.	FLEXIBLE PAVEMENT	LTA/S/REXX/XX/XXX
2.	RIGID PAVEMENT	LTA/S/REXX/XX/XXX
3.	CAST-IN-SITU BOX CULVERT	LTA/S/REXX/XX/XXX
4.	PRECAST SLABBED OVER U-DRAIN	LTA/S/REXX/XX/XXX
5.	PRECAST CONCRETE DROP-INLET CHAMBER	LTA/S/REXX/XX/XXX
6.	CAST-IN-SITU BOX CULVERT	LTA/S/REXX/XX/XXX
...
...
N	COVERED LINKWAY	LTA/S/REXX/XX/XXX



CHAINAGE	EXISTING LEVEL (m)	PROPOSED CENTRELINE (m)	OUTER KERB (LEFT) (m)	FG / DRAIN TOP LEVEL (m)	DRAIN COPE LEVEL (m)	DRAIN INVERT LEVEL (m)	CLEAR DRAIN DEPTH (m)	HORIZONTAL GEOMETRY	SUPERELEVATION
BP000.000	8.53	8.41	8.41	8.33	8.16	6.98	1.20	TL=50.26m	CH04.282 L=3.133 R=3.133
010.000	7.96	8.39	8.39	8.37	8.22	6.99	1.31		
020.000	7.39	8.44	8.44	8.49	8.34	6.95	1.39		
030.000	7.49	8.55	8.55	8.67	8.52	6.98	1.54		
040.000	7.72	8.73	8.73	8.86	8.77	7.31	1.45		
050.000	8.01	8.98	8.98	9.21	9.06	7.65	1.42		
060.000	8.36	9.28	9.28	9.51	9.36	7.98	1.39		
070.000	8.71	9.58	9.58	9.81	9.66	8.01	1.65		
080.000	9.00	9.88	9.88	10.11	9.96	8.04	1.92		
090.000	9.31	10.18	10.18	10.41	10.26	8.07	2.19		
100.000	9.61	10.46	10.46	10.71	10.56	8.40	2.16		
110.000	9.91	10.76	10.76	11.01	10.86	8.74	2.12		
120.000	10.20	11.08	11.08	11.28	11.13	9.07	2.09		
130.000	10.46	11.38	11.38	11.51	11.36	9.40	1.96		
140.000	10.73	11.68	11.68	11.74	11.59	9.73	1.86		
150.000	11.09	11.98	11.98	12.02	11.87	10.06	1.81		
160.000	12.39	12.27	12.27	12.29	12.14	10.39	1.75		
170.000	12.66	12.53	12.53	12.56	12.41	10.73	1.65		
180.000	12.85	12.75	12.75	12.79	12.64	11.06	1.65		
190.000	12.96	12.92	12.92	12.96	12.81	11.39	1.65		
200.000	13.04	13.06	13.06	13.04	12.89	11.71	1.65		
210.000	13.14	13.14	13.14	13.14	12.85	12.02	1.65		
220.000	13.29	13.19	13.19	13.29	12.85	12.37	1.65		
230.000	13.27	13.27	13.27	13.27	12.84	12.64	1.65		
240.000	13.32	13.32	13.32	13.32	12.84	12.91	1.65		
250.000	13.61	13.61	13.61	13.61	12.84	13.18	1.65		
260.000	13.52	13.52	13.52	13.52	12.84	13.45	1.65		

LTA DG / CG SUBMISSION																													
SHEET INDEX :		PE ENDORSEMENT :		CONSULTANT :		DEVELOPER / CONTRACTOR :		REV		SUBMISSION ES / CR NUMBER		DATE		DRAWN BY / CAD LEADER		DESCRIPTION		DESIGNED BY		CHECKED BY		APPROVED BY		PROJECT TITLE :		DRAWING TITLE :		PROJECT REFERENCE NUMBER :	
								R1		1 Apr 2026		Update to overall plan layout.												ROAD ALIGNMENT & DRAINAGE PLAN ROAD CX-B (EASTBOUND)					
		DAVID LEE*		MARY LIM*		JAMES TAN*																		DRAWING NUMBER : X/XXXX/XX/ALGD/1001		REV. NO. : R1			
		DATE : 1 DEC 2023		SCALE : 1:500		SHEET NO. : A0																		CAD FILE NAME :					

*NOTE : FULL NAME TO BE INDICATED ON PLAN

