



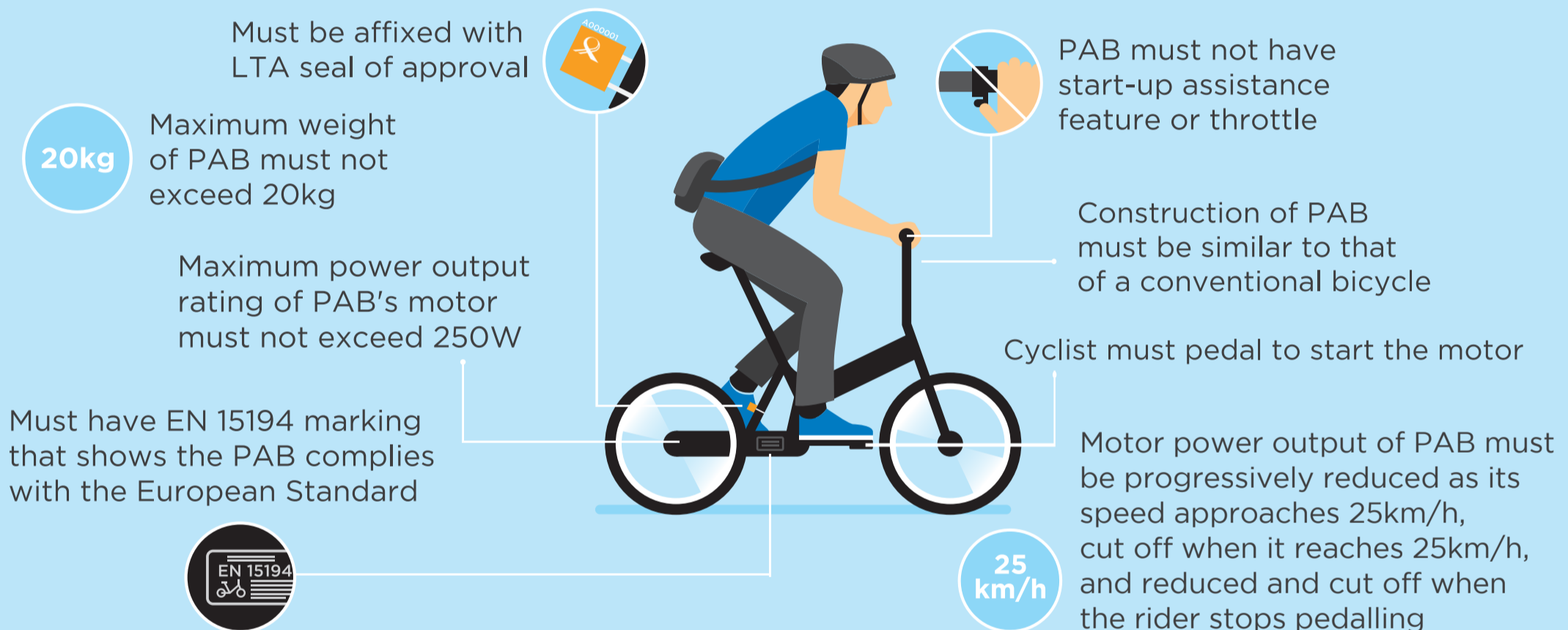


WARNING NOTICE

Device Requirements for Bicycles, Personal Mobility Devices (PMDs), and Power Assisted Bicycles (PABs) Used on Public Paths

Maximum Unladen Weight	Maximum Device Width	Maximum Device Speed (Only for motorised devices)	Certified to a Device Safety Standard (Only for motorised PMDs)
20kg	70cm	25km/h	UL2272
			

Technical Specifications for Power Assisted Bicycles (PABs) Used on Public Paths and on Roads



Penalty for riding non-compliant bicycle, PAB or PMD on public path
FINE up to \$10,000, or JAIL up to 6 months, or BOTH

Where Devices are Allowed to be Used¹



Legend:  Bicycles  Non-motorised PMDs  Motorised PMDs (e.g. electric scooters, electric unicycles)  LTA-Approved and Registered PABs

¹Riding of personal mobility devices, power-assisted bicycles or bicycles may be banned on certain footpaths or cycling paths even if compliant.
²Cycling paths refer to paths which are marked out with a bicycle logo or signage (and declared to be a shared path in the Active Mobility Act 2017).

Penalty for riding bicycle, PMD or PAB on pedestrian-only path | **Penalty for riding motorised PMD or PAB on footpath** | **Penalty for riding PMD on road**
FINE up to \$2,000, or JAIL up to 3 months, or BOTH

Repeat offenders may face higher court fines and/or jail terms