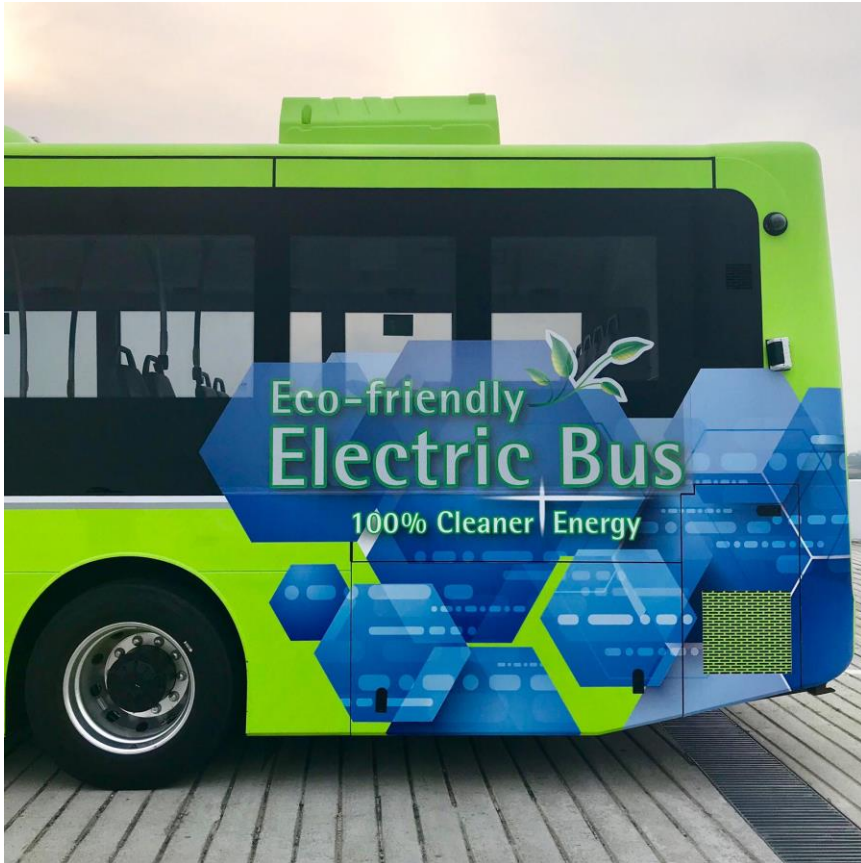


Electric Buses













Removal of the Centre Pole – Transport for all



(before)




(after)

	YUTONG Yutong E12		BYD BYD K9		Retrofitted E-BUS	
						
Capacity	12.0 Meters	80 Passengers	28 seats 52 standees 2 WAB	12.0 Meters	91 Passengers	35 seats 56 standees 1 WAB
Technology	 ~ 2-4 Hours Charge ~ 310 - 375 kWh / 200 - 300 Km			 ~ 10 Minutes Charge Up to 75 kWh / 48 Km		
Safety	 <h3>LFP batteries</h3> <p>Enhance safety of commuters as these batteries can withstand very high operating temperature</p>					

* All numbers are indicative pending trials

There are savings and benefits with the introduction of 60 electric buses

Annual Reduction of Emissions
~ 7840 tons CO₂



Approx. 1700 passenger cars

Annual Energy Savings
~ 22800 MWh

Sufficient to power up to 4276 Singapore household per year.

