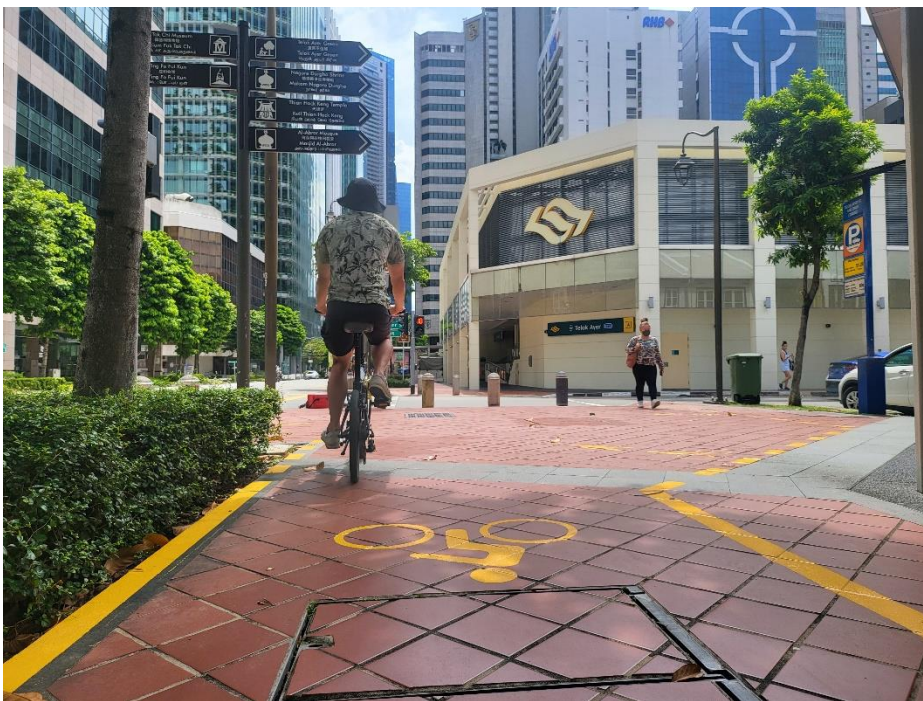


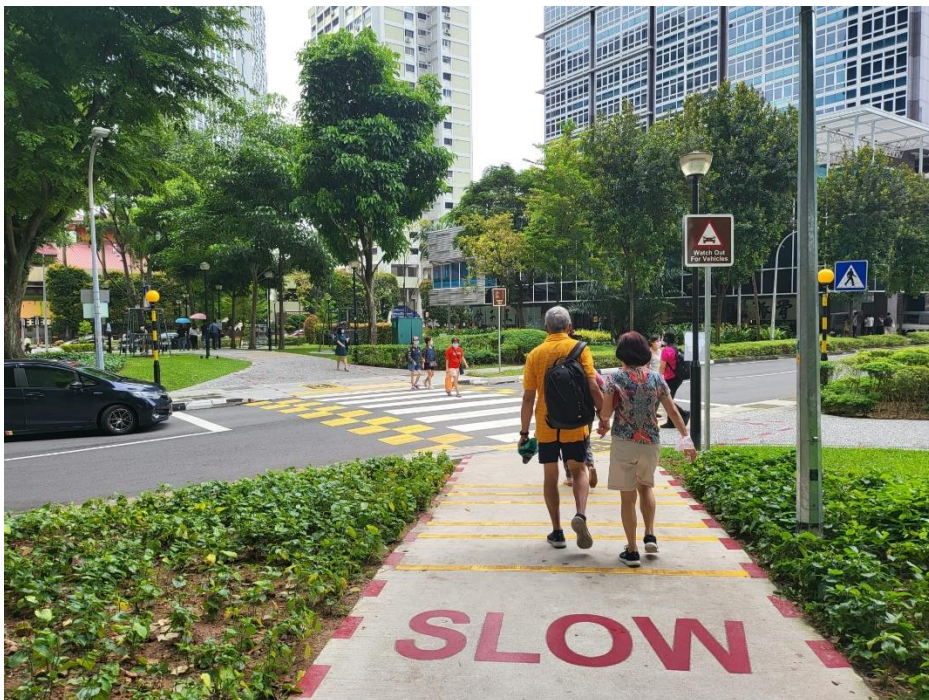
Cecil St near Keck Seng Tower, with solid red lines on existing grey tiled pavement, to demarcate dedicated cycling path



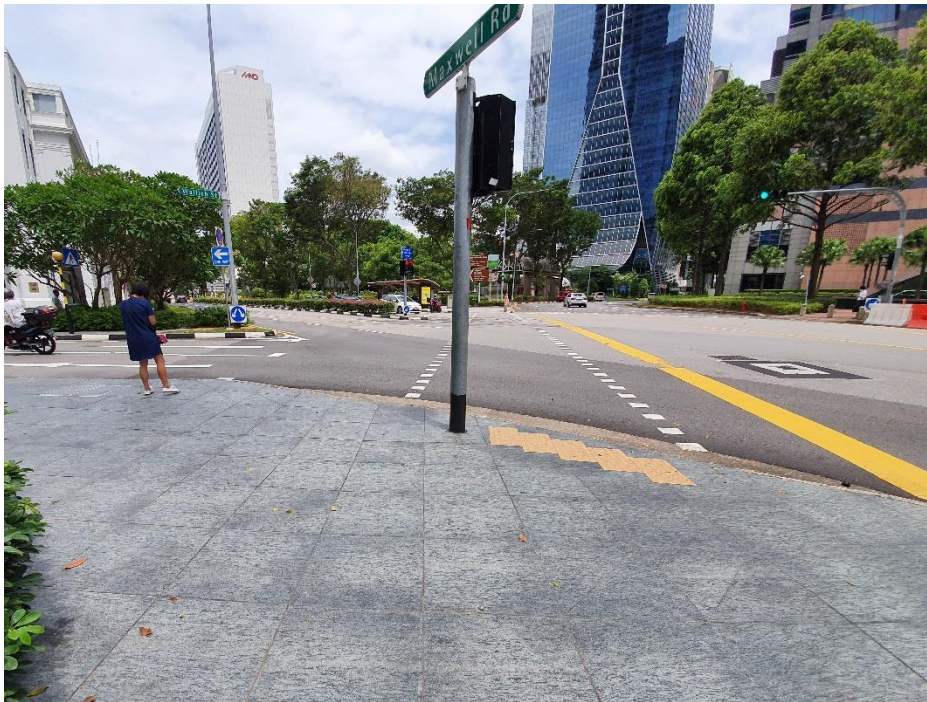
Telok Ayer MRT, with solid yellow lines on existing red tiled pavement, to demarcate dedicated cycling path



Shenton Way MRT, with dashed red lines on new grey tiled pavement, to demarcate shared walking / cycling path



New zebra crossing at Tras St/ Tras Link



Signalised crossing at Wallich St/ Maxwell Rd – before widening



Signalised crossing at Wallich St/ Maxwell Rd – after widening