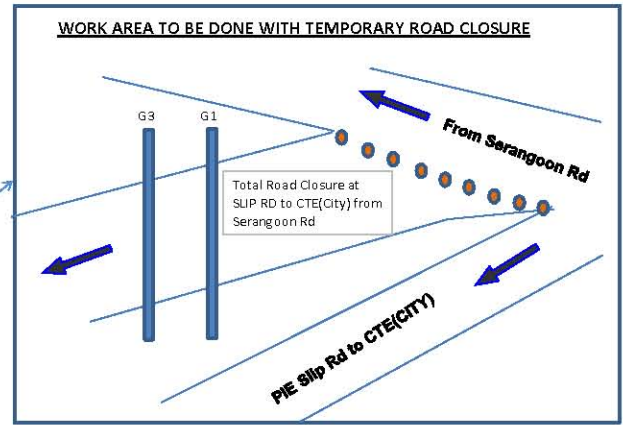


**TEMPORARY ROAD CLOSURE AND DETOUR PLAN FOR SLIP ROAD TO CTE (CITY) FROM UPP SERANGOON RD**



**LTA**  
 CTE (City) from Serangoon Rd will be closed on 6 Jan 2016 between 0001hrs to 0500hrs.  
 Motorist to divert to Braddell Exit Flyover, exit Braddell Rd