

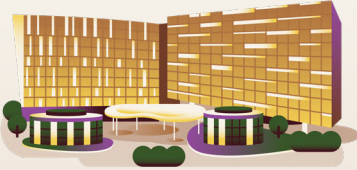
# Thomson-East Coast Line 3

# More City Adventures with TEL3

Bringing Food, Fun and Shopping Closer to You!



# 11 TEL3 Stations



DT10

TE11

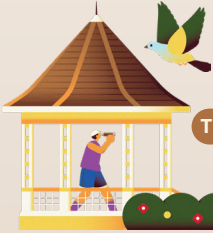
## Stevens

- Singapore Chinese Girls' School
- Raffles Town Club

The newly-opened Thomson-East Coast Line 3 spans 13.2km and brings the city closer to you, making popular spots in Singapore more accessible.

Let your car take a break and hop on TEL. Don't worry about topping up your travel card. Just tap in with SimplyGo via your EZ-Link SimplyGo, contactless bank cards, mobile phone or smartwatch. Simple and hassle-free.

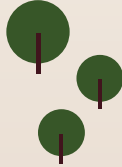
Check out the exciting attractions nearby!



TE12

## Napier

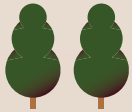
- Singapore Botanic Gardens
- Gleneagles Hospital
- Ministry of Foreign Affairs
- United States Embassy
- Australian High Commission



TE13

## Orchard Boulevard

- Tanglin Mall
- Singapore Tourism Board
- Camden Medical
- Hotel Jen



NS22

TE14

## Orchard

- ION Orchard
- Wheelock Place



TE15

## Great World

- Great World Mall
- River Valley Primary School



TE16

## Havelock

- Tan Boon Liat Building
- Giok Hong Tien Temple
- Holiday Inn Atrium



## Outram Park

- Singapore General Hospital
- Health Sciences Authority
- Health Promotion Board
- National Cancer Centre Singapore
- Dorsett Hotel
- Cantonment Police Complex

NE3

EW16

TE17



## Maxwell

- Maxwell Food Centre
- Buddha Tooth Relic Temple
- Chinatown

TE18



## Shenton Way

- Asia Square Tower 2
- Shenton House
- Marina One

TE19



## Marina Bay

- Marina Bay Financial Centre

TE20

NS27

CE2

## Gardens by the Bay

- Gardens by the Bay
- Satay by the Bay
- Marina Barrage

TE22



# Let Thomson-East Coast Line 3 take you places!



Scan the QR code for a sneak peek of the new stations!

Thomson-East Coast Line 3 (TEL3) has 11 new stations that will bring you closer to your favourite destinations, right in the heart of the city. The best part? **TEL3 connects you to all existing rail lines in Singapore, giving you more flexibility and commuting options by train.** Getting around has never been more convenient.

**When TEL3 opens, more than 180,000 households will be within a 10-minute walk from an existing TEL station. You can expect to save up to 40% of travel time when using TEL.** So why not go green by taking public transport and also reduce your carbon footprint?

# Travel for free along all TEL3 stations on Friday, 11 Nov 2022 from 10am to 9pm!

Join us for a **Rail Day Out in the City** to explore the newly-minted TEL3 stations!

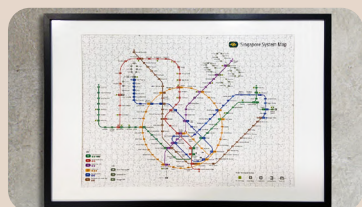
Grab your friends, family or colleagues, and head down to any TEL3 station. You can also switch to TEL3 at the following interchange stations:

- **Stevens Station (Downtown Line)**
- **Orchard Station (North-South Line)**
- **Outram Park Station (North East Line and East-West Line)**
- **Marina Bay Station (North-South and Circle Line)**

Immerse yourself in a host of activities, games, stage performances, and special appearances by our Thoughtful Bunch mascots right within the TEL3 stations!

Participate in “**TEL3 Go!**”, an immersive digital (and physical!) game, and stand a chance to win exciting prizes. Passenger service will officially begin from **13 November 2022**.

## KNACKSTOP



## Look out for these exciting items!

Shop at the **Knackstop pop-up store at Orchard station** to get your hands on playful, quirky and practical keepsakes inspired by land transport.

Tune in to our Facebook Livestream on LTA's Facebook page, **@WeKeepYourWorldMoving**, where we will unveil exciting new merchandise!



Get on board  
TEL3 for a  
smooth ride.



Breeze through your commute with our thoughtfully-designed wayfinding signages. First introduced on TEL, these **new signages feature brighter and larger icons** to direct commuters to their destinations.

We've also got you covered when you commute with children and senior family members! Outram Park station, for example, has caring and inclusive features like a Baby Care Room, Family Washroom and Heart Zones, a place for commuters to help other commuters.

TEL3 stations also boast **green features like inbuilt solar panels and skylights, resulting in energy savings!**

Experience the **91 new, fully automated four-car TEL trains** that come with more doors for faster boarding! Don't worry about missing a stop as the **all-new Dynamic Route Map Display (DRMD)** features key information such as the System Map, station arrivals and the direction of the opening of doors.



TE-11

# Stevens Station

Besides bringing you closer to home and schools, it has a little something for everyone from wholesome meals to picture-perfect moments!

## Dalvey Road Scenic View

Best-kept secret photography spot! Home to Glencaird, the only remaining White House built in the early 1900s. Come capture this slice of history!

**Dalvey Rd**

**Exit 2 near Margoliouth Rd (10 mins)**



Photo Credit — GRUB

## Savoury Bites

### GRUB

Try unique local flavours such as Crispy Soft Shell Chili Crab Pasta, Har Cheong Fried Chicken with Waffles and Kaya Burnt Cheesecake!

**30 Stevens Rd, #01-06 Novotel @ Stevens, S257840**

**Exit 2 near Stevens Rd (10-15 mins)**

### The Ritual

Free Wifi and charging points, insta-worthy minimalistic interior design and a quaint ambience; this could be the perfect hideout!

**383 Bukit Timah Rd, #01-09B, S259727**

**Exit 2 near Robin CI (3 mins)**



Photo Credit — The Ritual

# Napier Station

From a nutmeg plantation to Tanglin Barracks that once housed British troops, to the swanky Dempsey Hill it is now; history has turned quite a few pages in this area. The Singapore Botanic Gardens is only a hop, skip and jump away!

## Did You Know?

Napier is the only TEL3 station which has its architecture, structure and road alignment fully designed by LTA.



Photo Credit — Open Farm Community

## Open Farm Community

Let your kids touch and smell locally-grown vegetables, and taste how delicious Singapore-sourced ingredients can be.

**130E Minden Rd, S248819**

**Exit 2 near Middlesex Rd (7 mins)**



Photo Credit — Open Farm Community

## Ethnobotany Mural Series

Rest your eyes with soothing shades of green! These murals depict how people from different cultures engage with plants in their daily lives in festivals, rituals, crafts and healing.

**Botanic Gardens, 1 Cluny Rd, S259569**

**Exit 1 near Singapore Botanic Gardens (7-10 mins)**



Photo Credit — yipyc.com

# Orchard Boulevard Station

Experience the convenience of having the city closer to you with favourite spots at the head of Orchard Road, such as Tanglin Mall, within easier reach.

## Did You Know?

As the station is near some heritage rain trees, the construction work which included an underpass, was carefully planned with the trees' location taken into consideration.



Photo Credit — Tanglin Mall



## Tanglin Mall

The newly-revamped Tanglin Mall and its stores are now more accessible. Get ready to indulge in one-of-a-kind fashion, elevated dining options, and wellness experiences, as well as stores that will delight your little ones.

### House of AnLi

Sprucing up your home? How about something from this furniture and homeware store?

**Tanglin Mall, #02-139/141,  
#03-128/130 & 136/138  
163 Tanglin Rd, S247933  
Exit 1 near Cuscaden Rd (3 mins)**



# Orchard Station

Boasting the most exits and entrances (13) out of all our TEL stations, the historically-rich Orchard offers the best views of the city, along with mouth-watering delicacies for foodies and retail options galore for shopaholics.



Photo Credit — *unsplash / Jan Walter Luigi*



Photo Credit — *Greenview Cafe*

## ION Sky Observation Deck

When it comes to views, few can beat the one from Level 56 of ION Orchard. For that special occasion, simply spend \$50 at ION Orchard and get free entry and a welcome drink!

**ION Orchard, 2 Orchard Turn, S238801**  
**Exit 10 (5 mins)**

## Orchard Heritage Trail

From the Royal Thai Embassy to Emerald Hill and MacDonald House, follow this free discovery trail to find out more about Orchard Road and its rich history

Download the map [here](#) and explore on foot or by bus.

## Value-for-Money Finds in the City

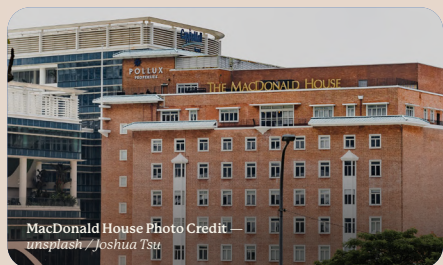
Stretch your dollar with affordable meals from Greenview Cafe which serves traditional handmade favourites such as Mee Hoon Kueh and Fried Rice, and oishi Japanese food from Nakajima Suisan Grilled Fish (tastes even better with no GST or service charge)!

### Greenview Cafe

**Far East Plaza, 14 Scotts Rd, #04-96, S228213**  
**Exit 7 (20 mins)**

### Nakajima Suisan Grilled Fish

**Takashimaya Food Hall, B2, #01-01,**  
**391 Orchard Rd, S238873**  
**Exit 7 (13 mins)**



MacDonald House Photo Credit — *unsplash / Joshua Tsu*



Row of shophouses at Emerald Hill

# Great World Station

Enter a great world of food and experiences set in the past, present and future!

## Did You Know?

Once a park. Now a city.  
This place was known as the Great World Amusement Park, a hotspot for Singapore's nightlife in the 1950s.



## A World of Delicacies

### Food Junction at Great World

Enjoy your meal in the train-themed Food Junction, complete with LED displays to simulate train platforms. What a futuristic vibe!

**Great World, 1 Kim Seng Promenade, #03-116, S237994**  
**Exit 2 direct to Great World (5-7 mins)**

### Culture Spoon

Dining can't get more exciting. A modern co-sharing kitchen concept with a rotating menu that brings you something different and eclectic each time.

**409 River Valley Rd, S248307**  
**Exit 4 near River Valley Rd (8 mins)**

## Kid-Friendly Activity

### Great World Playland

A little post-meal family activity never hurt anyone. In fact, you and your kids will love this one-of-a-kind playland that features a train and hot air balloon.

**Great World, 1 Kim Seng Promenade, Level 2, S237994**  
**Exit 2 direct to Great World (5-7 mins)**



# Havelock Station

Make a stop here to cross off some must-dos on your bucket list. Whether you're a hardcore foodie or a history aficionado, you're never going to have a dull moment at Havelock.

## Classic Singaporean Delights

A hearty plate of wok-fried goodness featured in the Michelin guide and Tu Tu Kuehs from none other than the original founder. These two spots are a must-visit!

### No.18 Zion Road Fried Kway Teow

Zion Riverside Food Centre, 70 Zion Rd,  
#01-17, S247792  
Exit 4 near Zion Rd (4 mins)

### Tan's Tu Tu Coconut Cake 陳家"啲啲"糕

22B Havelock Rd, #01-25, S162022  
Exit 2 near Havelock Rd (8 mins)



Photo Credit — Tan's Tu Tu



## Tan Boon Liat Building

Discover local hidden gems at this 14-storey treasure trove of furniture and home accessories! From Soul & Tables to The Artful House, this is where you can turn your house into a home.

315 Outram Rd, S169074  
Exit 1 near Tan Boon Liat (7 mins)



Photo Credit —  
Soul & Tables

## My Tiong Bahru Heritage Tour

Explore Singapore's only conserved public housing estate as you dive into pre-war and post-war architecture. Tour includes an exclusive visit to Singapore's first communal civilian air raid shelter in a residential estate which saved many lives during WWII.

To join this tour, sign up online at My Community's [website](#).

The tour spot is located near Exit 2 (11-15 mins)



Photo Credit —  
unsplash / Rayson Tan

TE-17

# Outram Park Station

Besides faster access to healthcare institutions in the area, find respite with hidden gems and lush greenery views to invigorate your body and mind.



Photo Credit — Grassroots Book Room

## **Grassroots Book Room**

Lose yourself in this quaint little bookstore! Enter a world of Chinese fiction and non-fiction titles, ranging from local to regional publications.

**25 Bukit Pasoh Rd, S089839**  
**Exit 3 towards Outram Rd (6 mins)**



## **City and Nature as One**

Explore and enjoy relaxing greenery and soothing views after a meal in the Duxton Hill area.

### **Pearl's Hill City Park**

**Along Chin Swee Rd, Pearl's Hill Rd, S169879**  
**Exit 8 near Outram Rd (8 mins)**

### **Pinnacle @ Duxton Sky Bridge**

This one's going to be a walk to remember. For just \$6, witness the stunning 360 views of our island city from the Sky Bridge.

**1G Cantonment Rd, S085601**  
**Exit 5 towards Cantonment Rd (8 mins)**

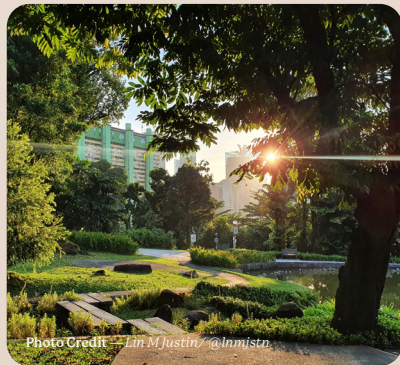
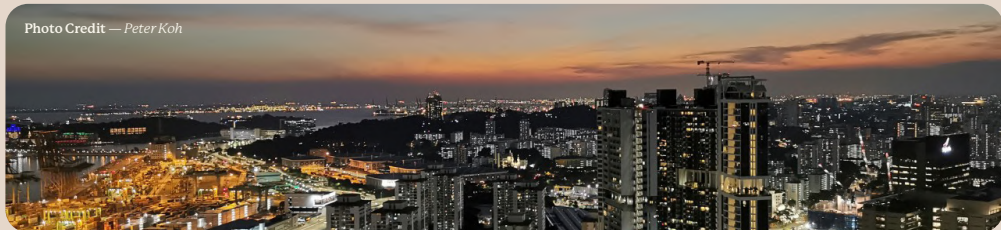


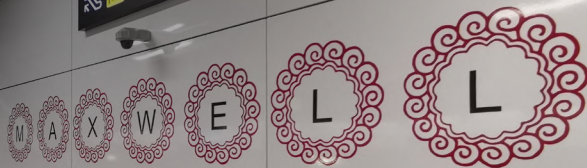
Photo Credit — Lin M Justin / @lmmjstr

Photo Credit — Peter Koh



TE-18

# Maxwell Station



It's going to be a day well spent, going on culinary tours along Ann Siang Hill and Duxton Hill, and taking a trip through Singapore's rich cultural heritage.



## Munch at Maxwell

From old-timey nibbles like Maxwell Fu Zhou Oyster Cake to affordable Eurasian cuisine from Popo And Nana's Delights, we dare you to hold yourself back!

### Maxwell Food Centre

1 Kadayannallur St, S069184

Exit 2 (1 min)



Photo Credit — unsplash / Joshua Tsu



## Maxwell Murals

Relive Singapore's rich cultural history with nostalgic murals featuring My Chinatown Home, Chinese wayang and a surprise visit from Detective Conan.

Take Exit 2 and walk for a short 3-6 mins along South Bridge Rd/Smith St.



Photo Credit — unsplash / Danist Soh



## Bringing Arts & Culture to You

Discover what makes Singapore truly unique by learning about our history and the importance of religious harmony in our community.

### Harmony in Diversity Gallery

5 Maxwell Rd, MND Building, S069110

Exit 2 (7 mins)

### Singapore City Gallery

45 Maxwell Rd, The URA Centre, S069118

Exit 2 towards Erskine Rd (3 mins)



Photo Credit — Harmony in Diversity Gallery

TE-19

# Shenton Way Station

Did you know? At about 38m deep, Shenton Way is one of the deepest TEL3 stations! The station's depth is equivalent to the height of a 13-storey building. Alight at this stop to find hearty meals and relaxing spots amidst the ever-bustling CBD of urban skyscrapers!

## A Taste of Sustainable Living

### The Social Kitchen x Gokul-RAAS Vegetarian

Be inspired to embrace a new way of life as you savour their variety of sumptuous plant-based meat meals.

**Lau Pa Sat, Stall 27, 18 Raffles Quay, S048582**  
**Exit 4 (5 mins)**



Photo Credit —  
The Social Kitchen x Gokul-RAAS Vegetarian



## The Social Space

Need a relaxing spot? This space houses a cafe and a retail store that lives and breathes sustainability.

**5 Straits View, #01-03 Marina One Residences, Garden Tower, S018935**  
**Exit 5 (3 mins)**

## Recharge with Nature

Where else will you find over 400 plant species co-existing in a concrete jungle? To top that, Marina One gives you a breathtaking view that mirrors rice paddy fields or the fountain at Jewel. If words fail you, take a seat at the open piano and compose a symphony!

**7 Straits View, S018936**  
**Exit 5 (6 mins)**

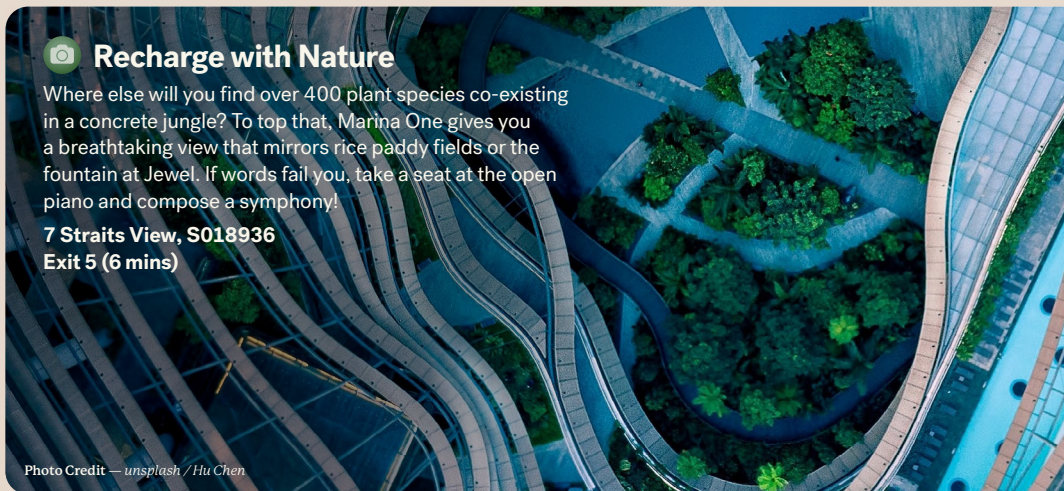


Photo Credit — unsplash / Hu Chen

# Marina Bay Station

There's more than meets the eye at Marina Bay, with new experiences and activities for family and friends to enjoy that go beyond MBS' posh and luxurious exterior.

## Did You Know?

Ice walls (known as the ground freezing method) were used for the first time during Marina Bay station's tunnelling work (at 40m deep) to stabilise the earth by solidifying the ground condition and avoiding water seepage.

Photo Credit — Singapore Sailing



## Marina Bay Sailing by DBS and Singapore Sailing

Wondering what to do this weekend? Be a sailor for a day! Experience the view of Marina Bay and Singapore's skyline as you sail around the waterfront promenade.

**70 Collyer Quay S049323**

Visit [this link](#) for more information.

**Exit 1 towards Central Boulevard (15 mins)**

## Spectra - A Light & Water Show

At 8pm & 9pm daily, immerse yourself in the beautiful symphony of dancing fountain jets, colourful projections, lasers and mist effects.

**10 Bayfront Ave, S018956**

**Exit 2 towards Bayfront Ave (15 mins)**

Photo Credit — Lin M Justin/ @lnmjstn

Photo Credit — Lin M Justin/ @lnmjstn



# Gardens by the Bay Station

Celebrate nature with insta-worthy views as you step out of this station. Whether it is a breezy picnic with friends, or cycling through the Marina Bay with family – it's time for some fun in the sun!



## Fun & Free Weekend Activities

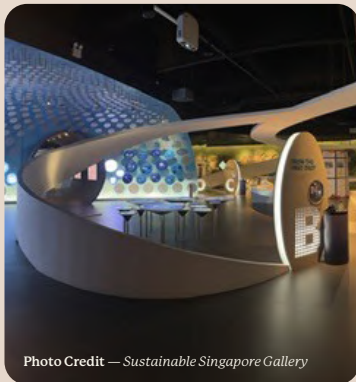
### Get your wheels ready!

Serene views greet you by day when you bring along your rollerblades or skateboard for a "wheel-y" good Walk-Cycle-Ride time along the bay!

### Marina Barrage, Sustainable Singapore Gallery

Thinking of what to do over the weekend? Head down for a free-and-easy picnic with impeccable views and learn about sustainability at the same time!

**8 Marina Gardens Dr, S018951**  
**Exit 1 (11 mins)**



# Art-in-Transit on TEL3

The Art in Transit (AIT) programme is Singapore's largest public art showcase integrating artworks by local artists into our MRT network. Here are some of the interesting artworks at the TEL3 stations.

## Orchard Boulevard Station Art: "PULSE"

Explore all the AIT artworks on TEL3 at [www.lta.gov.sg](http://www.lta.gov.sg)



## Stevens Station Art: "A Syllabus for Stevens"

Ever wish you could come up with your own subjects in school? These bookshelves feature book titles with subjects that students wish they could study in schools.

## Great World Station Art: "Great World, Great Times"

This isn't just a station. It's a time machine. These re-enacted retro advertisement photographs of the Great World Amusement Park are injected with a modern twist.



## Outram Park Station Art: "Mata Mata"

Guided by the artist, members from the Outram Park community produced hand drawings from their own photographs. These were put together by the artist to showcase a unique map of Outram Park. Come and experience the stories of the area through this community-generated map.

## Shenton Way Station Art: "Everyday Singapore 每日所见"

Money notes are the central motif of this artwork as represented by the images of old Singapore currencies, highlighting the city's reputation as a financial hub.



# See You Around the City on TEL3!



Land Transport Authority  
We Keep Your World *Moving*



[www.lta.gov.sg](http://www.lta.gov.sg)



[@WeKeepYourWorldMoving](https://www.facebook.com/WeKeepYourWorldMoving)



[LTA singapore](https://www.youtube.com/LTA singapore)



[@ltasg](https://www.instagram.com/ltasg)



[@ltasg](https://twitter.com/ltasg)



[@LTASingapore](https://www.telegram.com/@LTASingapore)



[@ltasg](https://www.tiktok.com/@ltasg)