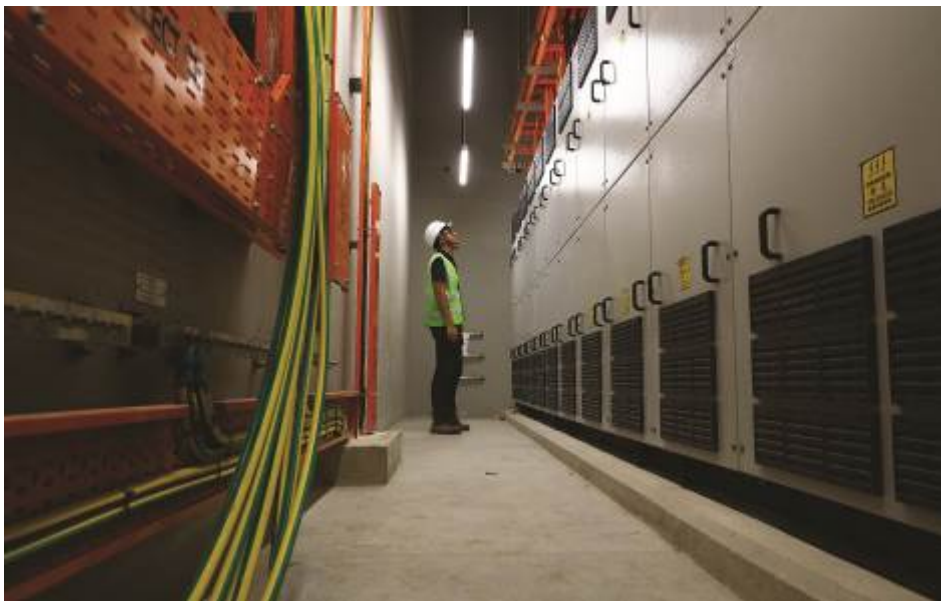


**ANNEX**



Wiring Verification by June Yeo



Inspection by Jun Pagalilauan



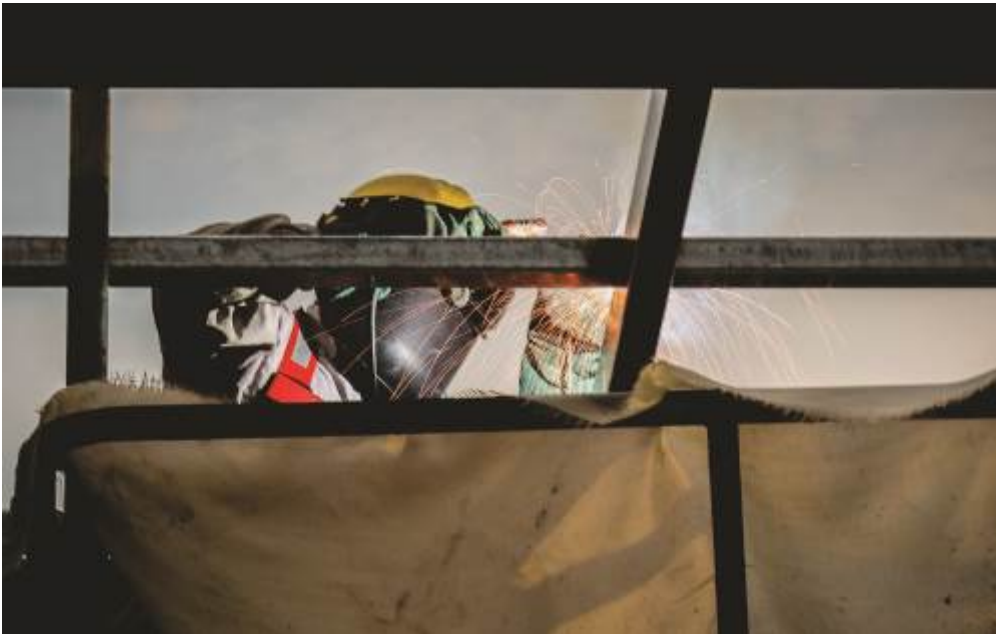
Steel Structure by Isaac Benjamin Ong



Instructions and Execution by Pichan Cruz



Skylight by Kevin Siyuan Ma



Sparkling 'Strong' by Eldridge Chang



Into the Underworld by Lemjay Lucas



The Road to the Future Is Under Construction by  
Lim Mark Anthony Pamintuan



Getting Work Done Together by Kajan Madrasmail



Safety Call by Mohd Yusof Bin Noor



Lowering of Rebar Cage of Diaphragm Wall by Jason Goh



Engineers at Excavation Site by Jason Goh



Arrival of New Trains on Site by Ryan Cheng



Carefully Unloading the New Train by Ryan Cheng



Working in Motion and Tandem by Calvin Lee